



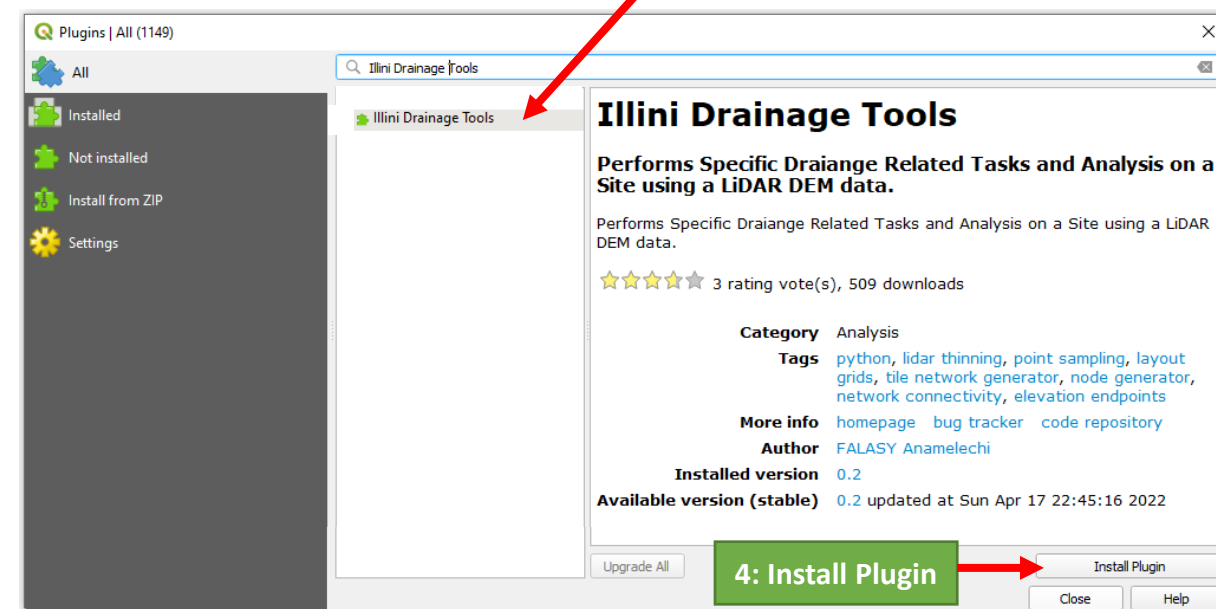
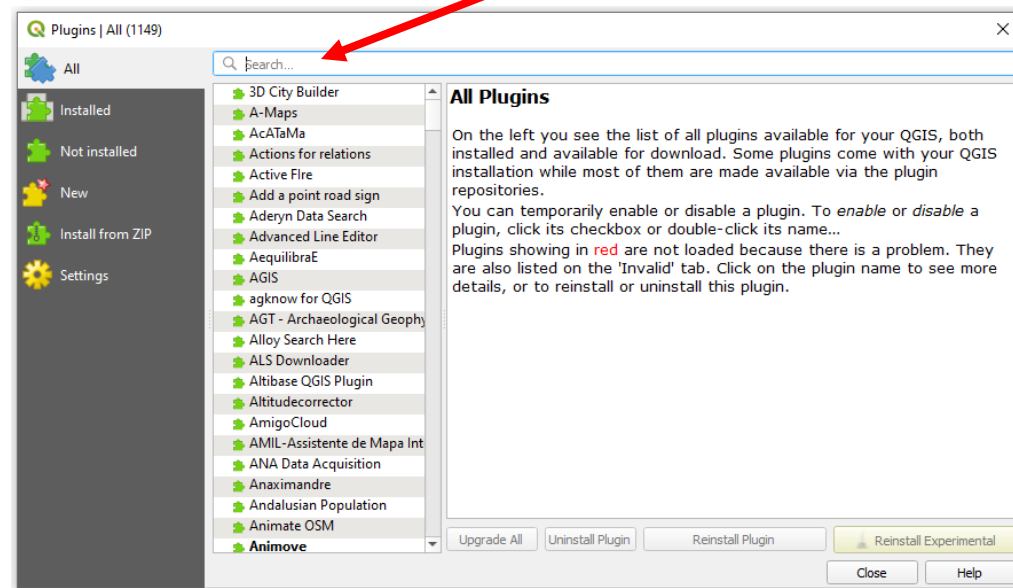
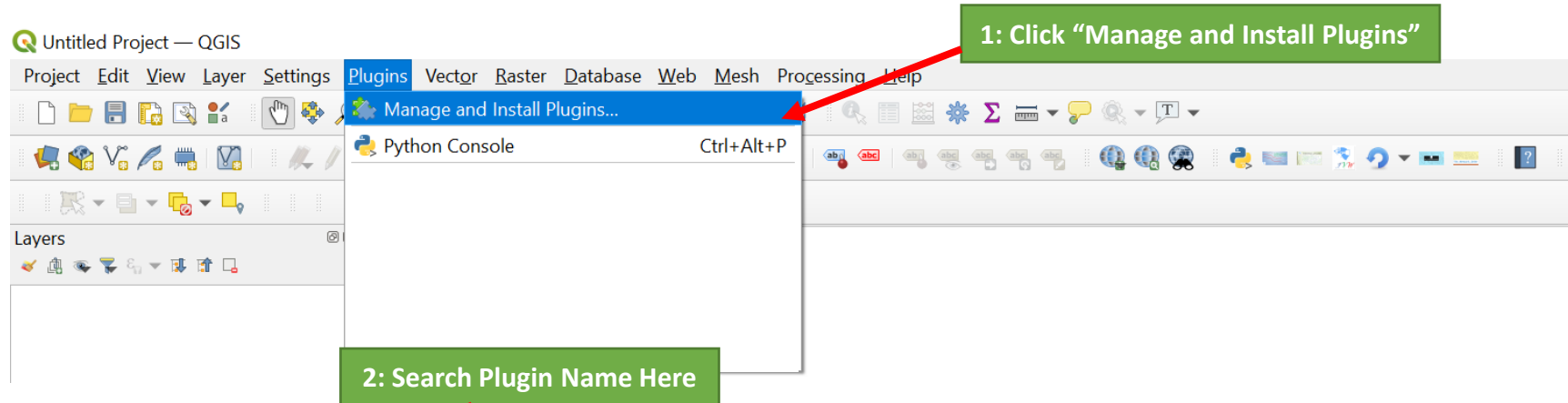
UNIVERSITY OF
ILLINOIS
URBANA-CHAMPAIGN

Downloading & Installing a Plugin in QGIS

By: Anamelechi FALASY

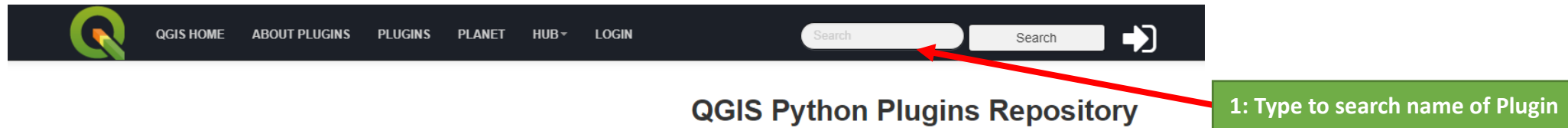
Option 1

- Open QGIS on your device or personal computer
- On the Menu Bar/Panel, select “Plugins” => “Manage and Install Plugins”



Option 2

On the Web browser, type the link: <https://plugins.qgis.org/plugins/>



All plugins

1684 records found — [Click to toggle descriptions](#)



Search

Search:

Illini drainage tools

Search

Search results

[2639] [Illini Drainage Tools](#)

2: Click to Open Plugin for Download



QGIS Python Plugins Repository

Download latest

Illini Drainage Tools

☆☆☆☆☆ (3) votes

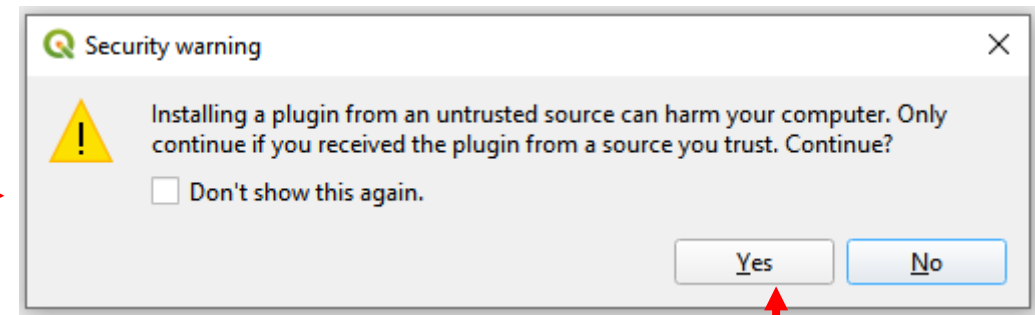
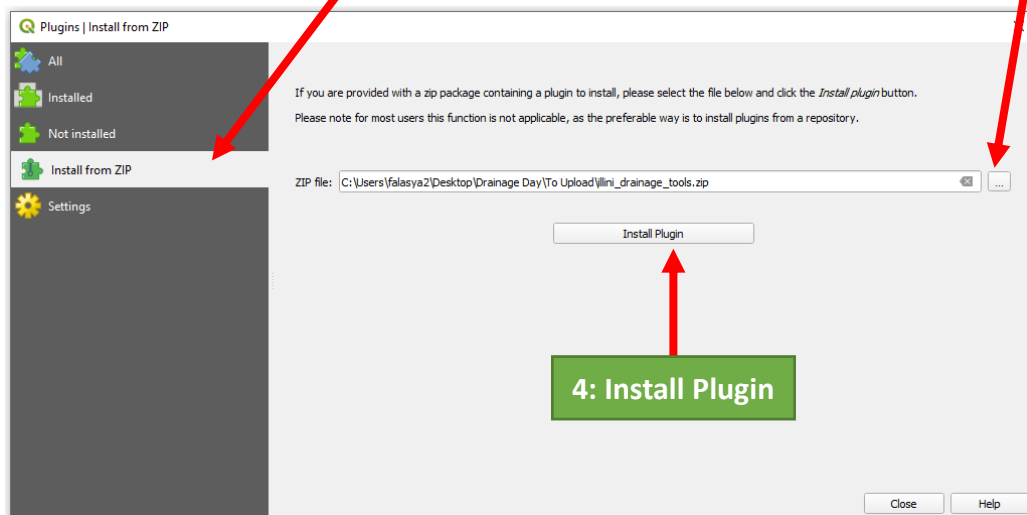
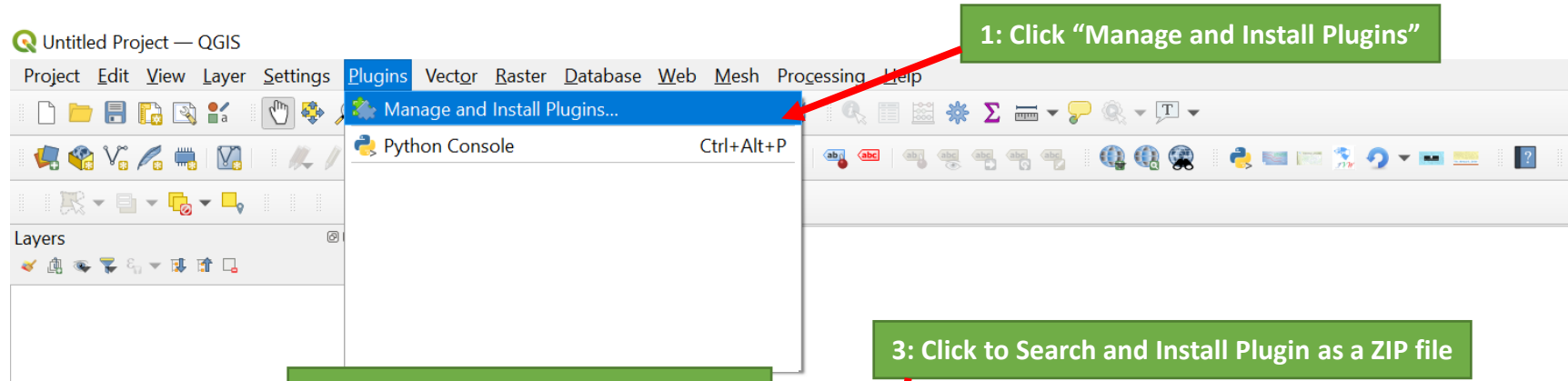
Performs Specific Drainage Related Tasks and Analysis on a Site using a LiDAR DEM data.

About Details Versions

Performs Specific Drainage Related Tasks and Analysis on a Site using a LiDAR DEM data.

Option 2 continued ...

- From your open QGIS on your device or personal computer
- On the Menu Bar/Panel, select “Plugins” => “Manage and Install Plugins”



Plugin Installation Check

- Close and Re-open QGIS on your device or personal computer
- On the Menu Bar/Panel, select “Plugins” => “Manage and Install Plugins”

1: Click “Manage and Install Plugins”

2: Select the Tab “Installed”

3: Ensure the “Checkbox” is marked

4: Click to Close

5: Follow steps to see and confirm Plugin is now hosted in your QGIS

Illini Drainage Tools

Performs Specific Drainage Related Tasks and Analysis on a Site using a LiDAR DEM data.

Performs Specific Drainage Related Tasks and Analysis on a Site using a LiDAR DEM data.

★★★★☆ 3 rating vote(s), 509 downloads

Category Analysis

Tags python, lidar thinning, point sampling, layout grids, tile network generator, node generator, network connectivity, elevation endpoints

More info homepage bug tracker code repository

Author FALASY Anamelechi

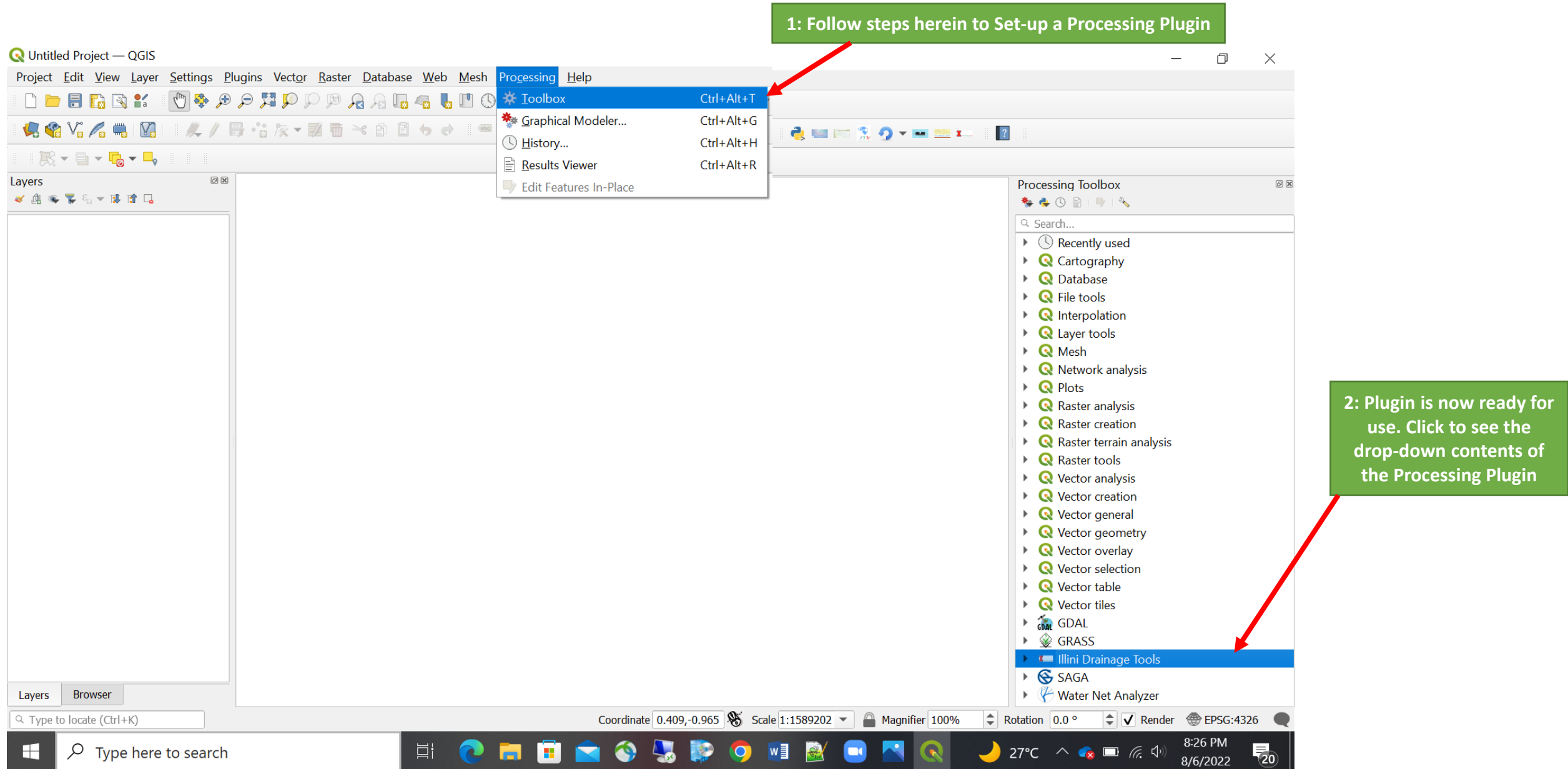
Installed version 0.2

Available version (stable) 0.2 updated at Sun Apr 17 22:45:16 2022

Upgrade All Uninstall Plugin Reinstall Plugin Close Help

Setting-up a QGIS Processing Plugin for Use

1: Follow steps herein to Set-up a Processing Plugin



The screenshot shows the QGIS desktop environment. The 'Processing' menu is open, displaying options: 'Toolbox' (Ctrl+Alt+T), 'Graphical Modeler...' (Ctrl+Alt+G), 'History...' (Ctrl+Alt+H), 'Results Viewer' (Ctrl+Alt+R), and 'Edit Features In-Place'. A red arrow points from the first instruction box to the 'Toolbox' option. The 'Processing Toolbox' panel on the right lists various tool categories, with 'Illini Drainage Tools' highlighted at the bottom. A second red arrow points from the second instruction box to this highlighted item.

2: Plugin is now ready for use. Click to see the drop-down contents of the Processing Plugin