

Melo yi ci Wolof

Weex

Xonq

Ñuul

Wert

Bulë

Xay

Mboq

Sokolaa

Soraas

Yolet

Roos

Xonq



Bindukaay bi **dafa xonq**

Lii bindukaay **bu** xonq la

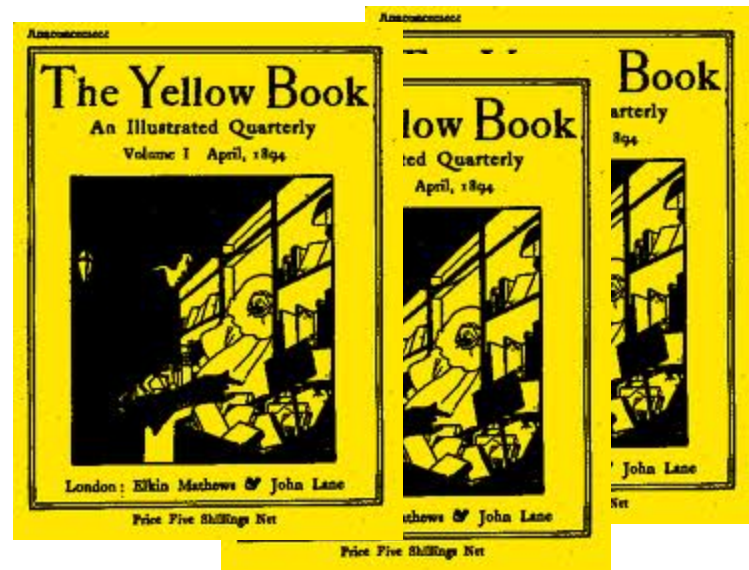
Bulë



Saag bi **dafa bulë**

Lii saag **bu** bulë la.

Mboq



Tééré yi **dañu** mboq

Yii tééré **yu** mboq lañu

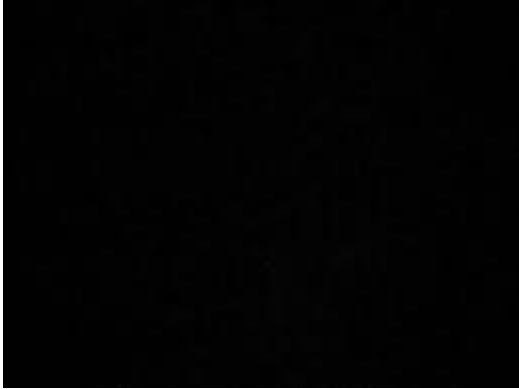
Wert



Dàll yi **dañu wert**

Yii dàll **yu wert** lañu

Ñuul



Karyoŋ bi **dafa ñuul**

Lii karyoŋ **bu** ñuul la.

Sokolaa



Saag bii **dafa** sokolaa.

Lii saag **bu** sokolaa la.

Weex

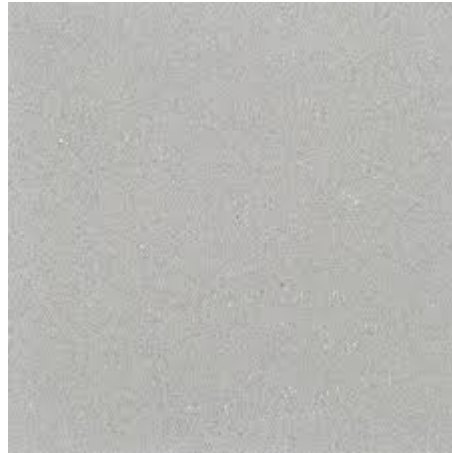


Oto bi **dafa weex** ak ñuul.

Lii oto **bu** weex ak ñuul la.

Xay

Lii dafa xay.



Soraas

Lii dafa soraas.



Yolet



Dàll yi **dañu** yolet.

Yii dàll **yu** yolet lañu.

Roos (Siis bii dafa roos)



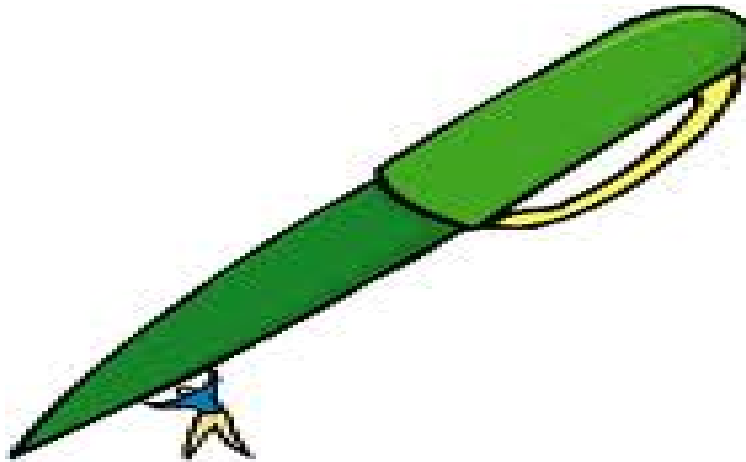
Nan la mel?

What is the color?

Nan la xalima gi mel?

Xalima gi dafa wert.

Lii ag xalima gu wert la



Xalima -g

Nan la xalima **yi** mel?
Xalima **yi** dañu xonq.
Ay xalima **yu** xonq lañu.



DSSIPP
Twist ball pen
Frosted surface
Frosted plastic nose cone
Cap: F21
Body: F21
Base: F21
Print Area:
BARREL Screen printing 35 x 20 mm, 1,38" x 1,18"
(max 6 colours)

Xalima **-y**

Nan la däll yii mel?

Däll yi.....

Ay



Däll **-y**

Nan la ginaar gi mel?

Ginaar

Lii



Ginaar -g

Nan la nag wi mel?

Nag.....

Lii.....



Nag -w