

# The Development and Implementation of Fire Prevention and Management Program for People who use Wheelchairs and Scooters Users

Jesiah Bradshaw<sup>1,2</sup>, Ziwei Li, MSOT<sup>1</sup>, Laura A. Rice, PhD, MPT, ATP<sup>1</sup>

<sup>1</sup>Department of Kinesiology and Community Health, College of Applied Health Sciences, University of Illinois at Urbana-Champaign, <sup>2</sup>Student Aging Researchers in Training Program (START)

## INTRODUCTION

- Physical disabilities play a role in 15% of home fire deaths each year.<sup>2</sup>
- In the event of a fire, it is important for one to be able to navigate obstacles
  - Ex: climbing over or under objects and navigating stair.
- Obstacles can be difficult or impossible for an individual who uses a wheelchair or scooter.<sup>1</sup>
- As a result, fire preparedness is essential for individuals who use wheelchairs or scooters.<sup>3</sup>
- Despite the need, limited evidenced-based programming exists to prepare individuals with SCI for fire events.

## AIM

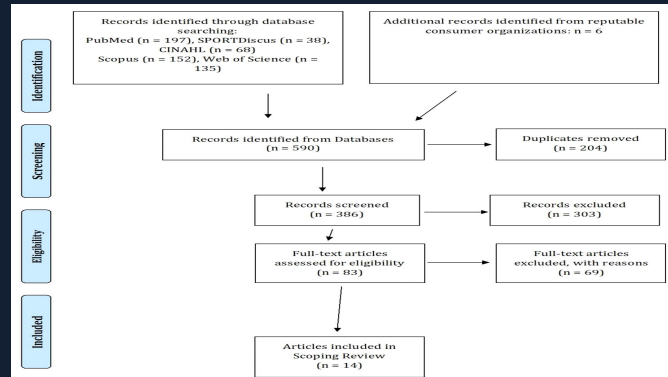
- Examine literature related to fire preparedness for individuals with SCI and stakeholders' input to inform the development of evidence-based education programming.

## METHODS

- A narrative scoping review was performed to examine best practices associated with fire preparedness for individuals with physical disabilities.
  - Peer-reviewed articles and materials from reputable consumer organizations were utilized.
- Four SCI individuals with injuries ranging from C6 to L1 were interviewed; of these, one uses a power wheelchair and the other three use manual wheelchairs.
- Experienced firefighters from local fire departments, were also recruited to provide input into the design of the intervention program.

## RESULTS

- Twenty articles (14 peer-reviewed, 6 consumer) were evaluated. (Details presented in figure below)
- Findings highlighted:
  - The lack of resources regarding adequate training
  - Emphasized the importance of early detection systems
  - The need for accessible fire suppression devices
  - The development of a detailed, accessible evacuation plan<sup>4,5</sup>



## CONCLUSIONS/ Future Directions

- Findings highlight the importance of safe home practices, early detection systems, and use of appropriate equipment by individuals with SCI.
- Findings have guided the development of an evidenced-based fire prevention and management program for individuals who use wheelchairs (Fire Evacuation for Wheelchair Users - FEW).
- The efficacy of the FEW program will be evaluated in Summer 2023.



## ACKNOWLEDGEMENTS/Citations

I would like to thank the START Program and the DPQoL Lab (Dr. Laura Rice) for the opportunity and guidance throughout this research project. Please scan the QR code for citations associate with this poster.

**START**  
STUDENT AGING RESEARCHERS IN TRAINING



**I** ILLINOIS