

Developments in Primatology: Progress and Prospects

Series Editor

Louise Barrett, Lethbridge, Canada

More information about this series at <http://www.springer.com/series/5852>

Martín M. Kowalewski • Paul A. Garber
Liliana Cortés-Ortiz • Bernardo Urbani
Dionisios Youlatos
Editors

Howler Monkeys

Behavior, Ecology, and Conservation



Springer

Editors

Martín M. Kowalewski
Estación Biológica Corrientes
Museo Argentino de Ciencias Naturales
Consejo Nacional de Investigaciones
Científicas y Técnicas (CONICET)
Buenos Aires, Argentina

Liliana Cortés-Ortiz
Museum of Zoology
Department of Ecology and Evolutionary
Biology
University of Michigan
Ann Arbor, MI, USA

Dionisios Youlatos
Department of Zoology
Aristotle University of Thessaloniki
Thessaloniki, Greece

Paul A. Garber
Department of Anthropology
University of Illinois at Urbana-Champaign
Urbana, IL, USA

Bernardo Urbani
Centro de Antropología
Instituto Venezolano de Investigaciones
Científicas
Caracas, Venezuela

ISBN 978-1-4939-1959-8

ISBN 978-1-4939-1960-4 (eBook)

DOI 10.1007/978-1-4939-1960-4

Springer New York Heidelberg Dordrecht London

Library of Congress Control Number: 2014955679

© Springer Science+Business Media New York 2015

This work is subject to copyright. All rights are reserved by the Publisher, whether the whole or part of the material is concerned, specifically the rights of translation, reprinting, reuse of illustrations, recitation, broadcasting, reproduction on microfilms or in any other physical way, and transmission or information storage and retrieval, electronic adaptation, computer software, or by similar or dissimilar methodology now known or hereafter developed. Exempted from this legal reservation are brief excerpts in connection with reviews or scholarly analysis or material supplied specifically for the purpose of being entered and executed on a computer system, for exclusive use by the purchaser of the work. Duplication of this publication or parts thereof is permitted only under the provisions of the Copyright Law of the Publisher's location, in its current version, and permission for use must always be obtained from Springer. Permissions for use may be obtained through RightsLink at the Copyright Clearance Center. Violations are liable to prosecution under the respective Copyright Law.

The use of general descriptive names, registered names, trademarks, service marks, etc. in this publication does not imply, even in the absence of a specific statement, that such names are exempt from the relevant protective laws and regulations and therefore free for general use.

While the advice and information in this book are believed to be true and accurate at the date of publication, neither the authors nor the editors nor the publisher can accept any legal responsibility for any errors or omissions that may be made. The publisher makes no warranty, express or implied, with respect to the material contained herein.

Printed on acid-free paper

Springer is part of Springer Science+Business Media (www.springer.com)

*M.K.: To Mariana and Bruno,
and to my parents and sisters*

*P.A.G.: To Seymour, Sylvia, Jenni, Sara,
and of course Chrissie*

L.C.O.: To Paloma, Tommy, and Tom

B.U.: To my family, to my mentors, to Padmini

*D.Y.: To Evangelos (Sr. and Jr.), Alexandra,
and Ioanna*

Foreword

It is a privilege to be able to study wild howler monkeys, and an honor to have been invited to write the foreword to this volume of collected papers about them. Thank you to the howlers—everything I know, I learned from you—and thank you to the volume editors for this invitation and to all of the Latin American countries which so generously enabled me carry out research on howler monkeys in their forests.

Alouatta is considered the most successful New World primate genus in terms of ecological dominance as defined by overall biomass. Howler monkeys have a wide geographical distribution, which extends from southern Mexico through Central and South America and into northern Argentina. Their great success as a genus stems in large part from their ability, unusual in a neotropical primate, to use leaves as a primary food source. Fruits and flowers are also popular howler foods but it is their ability to survive for long periods on diets consisting largely of leaves that underlies their great ecological success. This ability has enabled howler monkeys to occupy a tremendous diversity of habitat types throughout the neotropics and to survive in small forest fragments that could not support other primates.

Despite being known for the loud sonorous howling vocalization produced by adult males, howler monkeys are quite subtle, secretive, and quiet monkeys most of the time. They spend a high percentage of their daylight hours throughout the year quietly resting or sleeping to conserve energy—this inactivity is an important feature of their overall foraging strategy. I have studied howler monkeys now for more than 40 years and to me they remain endlessly complex, fascinating, and endearing study subjects. I remember my parents asking me, after a decade or so of howler research and many missed holidays and family celebrations, if I hadn't answered just about all the questions that could possibly be asked about howler monkeys. But as the collection of papers in this volume clearly shows, there is thankfully no end in sight to the array of interesting questions that can be posed about members of the genus *Alouatta*.

Because of howlers' wide distribution and abundance, it's no surprise that over the decades an unusually large number of primatologists have carried out research on wild howler monkeys such that, today, it is considered one of the best studied of all primate genera. Indeed, though perhaps not well appreciated, the first successful

systematic naturalistic study of *any* wild primate anywhere in the world was carried out on howler monkeys. In the early 1930s, C. Ray Carpenter travelled from the USA to Panama to begin a field study of mantled howler monkeys (*Alouatta palliata*) on Barro Colorado Island (BCI). Carpenter was motivated to study wild monkeys because he was convinced that a better understanding of primate behavior in the natural environment would provide important insights into key features of human biology and behavior. Though earlier attempts had been made to try and study wild chimpanzees and mountain gorillas, these study subjects proved elusive and little information was compiled. In contrast, Carpenter was able to spend long periods of time both in 1932 and 1933 observing howler monkeys at close range and amassed a wealth of detailed behavioral information. He also collected and identified many important howler food species and censused all individuals in every howler group on BCI two times during his fieldwork—providing invaluable baseline data for future studies of howler monkey population dynamics at this site. Carpenter produced an excellent and meticulously organized scholarly monograph from his field study, one filled with original information about howler monkey behavioral ecology—information as valid and interesting today as it was in 1934 when his original monograph *A Field Study of The Behavior and Social Relations of Howling Monkeys* was published. To say Carpenter was decades ahead of his time does not begin to do him justice.

After Carpenter's pioneering field study, world events intervened, leading to a hiatus in howler monkey research. But in the 1950s and 1960s, a number of young researchers followed in Carpenter's footsteps and travelled to BCI to observe howler monkeys—though generally only for short periods of time. During this period, field studies were also begun on red howlers at Hato Masaguaral in Venezuela and in 1972 on mantled howler monkeys at La Pacifica in Costa Rica. My howler monkey research began in 1974. Barro Colorado Island was an ideal study site because I was interested in dietary questions and by that time, a considerable amount of information was available on features of the BCI forest and the island had an excellent herbarium—essential tools for a dietary study. During my initial fieldwork, there were no other primate researchers on the island. But by 1978, a few short years later, primate field studies had begun to take off and so many graduate students began arriving on BCI to examine one or another attribute of howler monkeys that often we had to take turns collecting data on the more popular study groups near the laboratory buildings.

Though we now know a great deal more about howler monkeys than we did in the Carpenter's day, we still have much to discover about this engaging New World primate. Answering important questions about the ecology and behavior of living systems generally involves a long investment of time and effort and many years of continuous study at particular research sites. It is ironic that as this fact has become more apparent, funding to support long-term field studies has become increasingly difficult to secure. If our knowledge of living systems such as howler monkeys is to progress, researchers must not only ask the interesting questions but also have the time to compile the data needed to answer them. To enable the relevant studies to be carried out, however, our first task is to ensure the successful conservation of howler

monkeys and their habitats throughout the neotropics. Without the habitats and monkeys, funding will not be necessary as there will be nothing left for us to study.

Editors Martín Kowalewski, Paul Garber, Liliana Cortés-Ortiz, Bernardo Urbani, and Dionisios Youlatos are to be commended for this timely and informative two-volume series on the genus *Alouatta*. What is particularly special and impressive about this and its companion volume is the international roster of countries represented by the volume's contributors and, in particular, the welcome contribution of so many Latin American scholars. This cohort of productive and dedicated Latin American primatologists represents the single most profound change that has occurred in my 40 years of studying wild howler monkeys. Every country in Latin America but Chile and perhaps Uruguay hosts at least one species of *Alouatta* and some countries are host to two, three, or more howler species. The conservation future of howlers and their habitats depends on the knowledge and expertise of these local Latin American scholars, who are in the best position to validate the importance of howler conservation and who understand the politics and policies of their own countries. Their influence is necessary to develop those policies and implement those decisions about conservation areas which will serve to ensure the survival of all howler monkey species into the indefinite future.

Environmental Science, Policy, & Management
University of California
Berkeley, CA, USA

Katharine Milton

Acknowledgment

We acknowledge and gratefully thank the following scholars for reviewing earlier drafts of chapters in this volume: Katie Milton, Peter Kappeler, Leila M. Porter, Laurence Culot, Júlio Cesar Bicca-Marques, Mary S. M. Pavelka, Michelle Bezanson, Pedro Américo D. Dias, Gabriel Fernández-Ramos, John G. Fleagle, Daniel Gebo, Kenneth Kaemmerer, Phyllis C. Lee, Manuel Lizarralde, and Katherine MacKinnon.

Contents

Part I Introduction

- 1 Why Is It Important to Continue Studying the Behavioral Ecology and Conservation Management of Howler Monkeys?** 3
Martín M. Kowalewski, Paul A. Garber, Liliana Cortés-Ortiz, Bernardo Urbani, and Dionisios Youlatos

Part II Behavioral Ecology

- 2 Diets of Howler Monkeys** 21
Pedro Américo D. Dias and Ariadna Rangel-Negrín
- 3 Insights into Reproductive Strategies and Sexual Selection in Howler Monkeys** 57
Sarie Van Belle and Júlio César Bicca-Marques
- 4 Evidence of Alternative Dietary Syndromes and Nutritional Goals in the Genus *Alouatta*** 85
Paul A. Garber, Nicoletta Righini, and Martín M. Kowalewski
- 5 Seed Dispersal by Howler Monkeys: Current Knowledge, Conservation Implications, and Future Directions** 111
Víctor Arroyo-Rodríguez, Ellen Andresen, Susana P. Bravo, and Pablo R. Stevenson
- 6 Interactions of Howler Monkeys with Other Vertebrates: A Review** 141
Jurgi Cristóbal-Azkarate, Bernardo Urbani, and Norberto Asensio

7 Solving the Collective Action Problem During Intergroup Encounters: The Case of Black and Gold Howler Monkeys (*Alouatta caraya*) 165
 Martín M. Kowalewski and Paul A. Garber

8 Howler Monkey Positional Behavior 191
 Dionisios Youlatos and Denise Guillot

9 Ranging Behavior and Spatial Cognition of Howler Monkeys..... 219
 Vanessa Barbisan Fortes, Júlio César Bicca-Marques, Bernardo Urbani, Vanina Alejandra Fernández, and Thiago da Silva Pereira

Part III Conservation and Management

10 The Ethnoprimateology of the Howler Monkeys (*Alouatta* spp.): From Past to Present 259
 Bernardo Urbani and Loretta A. Cormier

11 Anthropogenic Habitat Modification, Tourist Interactions and Crop-Raiding in Howler Monkeys..... 281
 Tracie McKinney, Jessica L. Westin, and Juan Carlos Serio-Silva

12 Health and Welfare of Howler Monkeys in Captivity 313
 Rosalía Pastor-Nieto

13 Fruit as a Key Factor in Howler Monkey Population Density: Conservation Implications..... 357
 Alison M. Behie and Mary S.M. Pavelka

14 Conservation of *Alouatta*: Social and Economic Drivers of Habitat Loss, Information Vacuum, and Mitigating Population Declines 383
 Alejandro Estrada

Part IV Conclusion

15 New Challenges in the Study of Howler Monkey Behavioral Ecology and Conservation: Where We Are and Where We Need to Go 413
 Paul A. Garber and Martín M. Kowalewski

Subject Index..... 429

Taxonomy Index 437

Contributors

Ellen Andresen Centro de Investigaciones en Ecosistemas, Universidad Nacional Autónoma de México, Morelia, Michoacán, México

Víctor Arroyo-Rodríguez Centro de Investigaciones en Ecosistemas, Universidad Nacional Autónoma de México, Morelia, Michoacán, México

Norberto Asensio Faculty of Environment and Resource Studies, Mahidol University, Nakhon Pathom, Thailand

Alison M. Behie School of Archaeology and Anthropology, College of Arts and Social Sciences, Australia National University, Acton, ACT, Australia

Sarie Van Belle Estación de Biología Tropical Los Tuxtlas, Instituto de Biología, Universidad Nacional, Autónoma de México, Ciudad de México, Distrito Federal, Mexico

Júlio César Bicca-Marques Laboratório de Primatologia, Departamento de Biodiversidade e Ecologia, Faculdade de Biociências, Pontifícia Universidade Católica do Rio Grande do Sul, Porto Alegre, Brazil

Susana P. Bravo IEGEBA—Instituto de Ecología, Genética y Evolución de Buenos Aires, Facultad de Ciencias Exactas y Naturales, Universidad de Buenos Aires—CONICET, Buenos Aires, Argentina

Loretta A. Cormier Department of Anthropology, University of Alabama at Birmingham, Birmingham, AL, USA

Liliana Cortés-Ortiz Museum of Zoology, Department of Ecology and Evolutionary Biology, University of Michigan, Ann Arbor, MI, USA

Jurgi Cristóbal-Azkarate Division of Biological Anthropology, Department of Archaeology and Anthropology, University of Cambridge, Cambridge, UK

Pedro Américo D. Dias Instituto de Neuroetología, Universidad Veracruzana, Xalapa Enríquez, México

Alejandro Estrada Estación de Biología Tropical Los Tuxtlas, Instituto de Biología, Universidad Nacional Autónoma de México, Ciudad de México, México

Vanina Alejandra Fernández Estación Biológica Corrientes, Museo Argentino de Ciencias Naturales, “Bernardino Rivadavia”—CONICET, Buenos Aires, Argentina

Vanessa Barbisan Fortes Laboratório de Primatologia, Centro de Educação Superior Norte do Rio Grande do Sul, Universidade Federal de Santa Maria, Palmeiradas Missões, Brazil

Paul A. Garber Department of Anthropology, University of Illinois at Urbana-Champaign, Champaign, IL, USA

Denise Guillot Department of Anthropology, University of Michigan, Ann Arbor, MI, USA

Martín M. Kowalewski Estación Biológica Corrientes, Museo Argentino de Ciencias Naturales, Consejo Nacional de Investigaciones Científicas y Técnicas (CONICET), Buenos Aires, Argentina

Tracie McKinney Applied Sciences, University of South Wales, Pontypridd, United Kingdom

Stephen Nash Department of Art, State University of New York, Stony Brook, NY, USA

Conservation International, Arlington, VA, USA

Rosalía Pastor-Nieto School of Veterinary Medicine, Universidad del Valle de México, Campus Coyoacán, México

Mary S.M. Pavelka Department of Anthropology, University of Calgary, Calgary, AB, Canada

Ariadna Rangel-Negrín Instituto de Neuroetología, Universidad Veracruzana, Veracruz, México

Nicoletta Righini Department of Anthropology, University of Illinois, Urbana, IL, USA

Juan Carlos Serio-Silva Departamento de Biología y Conservación de Vertebrados, Instituto de Ecología A.C., Xalapa, México

Aralis Shedden Centro de Investigaciones Tropicales, Universidad Veracruzana, Xalapa Enríquez, México

Thiago da Silva Pereira Neotropical Primate Conservation, Cheltenham, Gloucestershire, UK

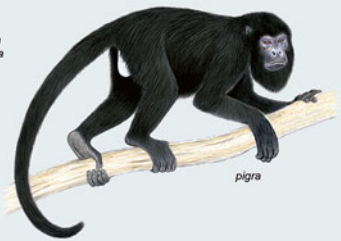
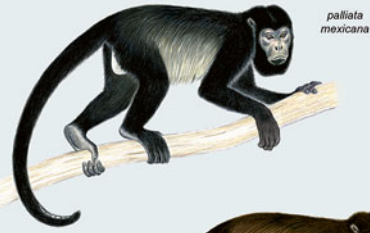
Behavioral Ecology and Sociobiology Unit, German Primate Center, Göttingen, Germany

Pablo R. Stevenson Laboratorio de Ecología de Bosques Tropicales y Primatología, Departamento de Ciencias Biológicas, Universidad de Los Andes, Bogotá, Colombia

Bernardo Urbani Centro de Antropología, Instituto Venezolano de Investigaciones Científicas, Caracas, Venezuela

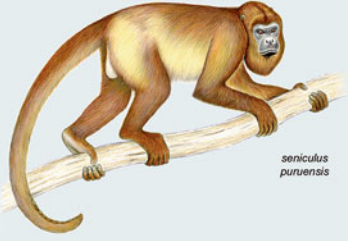
Jessica L. Westin Department of Math/Science, Kirkwood Community College, Cedar Rapids, IA, USA

Dionisios Youlatos Department of Zoology, School of Biology, Aristotle University of Thessaloniki, Thessaloniki, Greece





*seniculus
seniculus*



*seniculus
puruensis*



*seniculus
juara*



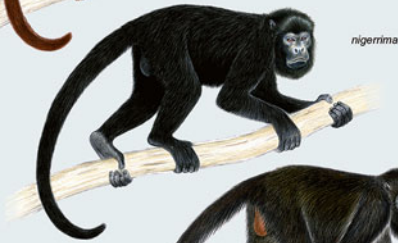
arctoidea



macconnelli



sara



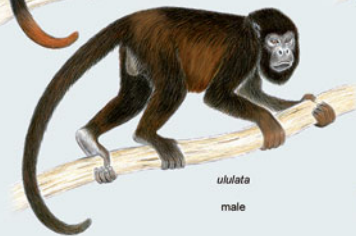
nigerrima



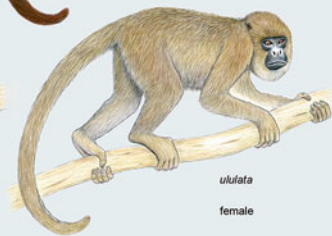
belzebul



discolor



*ululata
male*



*ululata
female*