

THEA 431 The Lighting Laboratory
Portable Mini Light Lab Installation Project
Krannert Center for the Performing Arts

Associate Professor: Robert Perry

Students: Yingman Tang

Quinn Schuster

Zack Saunders

MODULE 8: Luminaire Madness

Final Presentation: Wednesday, April 14th 3-4:30pm

Can stage practicals be more than just a light fixture? How can you tell a story using a lighting practical as another character or part of the narrative?

- Using approved inventory from the lighting fixture vault in the pit of the Krannert Center and four portable 4x600w/10a dimmers and laptop loaned out from the StageStock inventory, you are tasked with creating an organic art-lighting sculpture installation in the lobby of the Krannert Center.
- Each of the installations will be programmed to run on a continuous loop as if installed in a museum.
- All three projects will be on display for public viewing from April 14th-16th.
- Comments cards will be able for any onlookers who wish to leave feedback.

[Web Link to Lighting Fixture images](#)



MODULE 9: Aurora Borealis

Final Presentation: Wednesday, April 21st 3-4:30pm

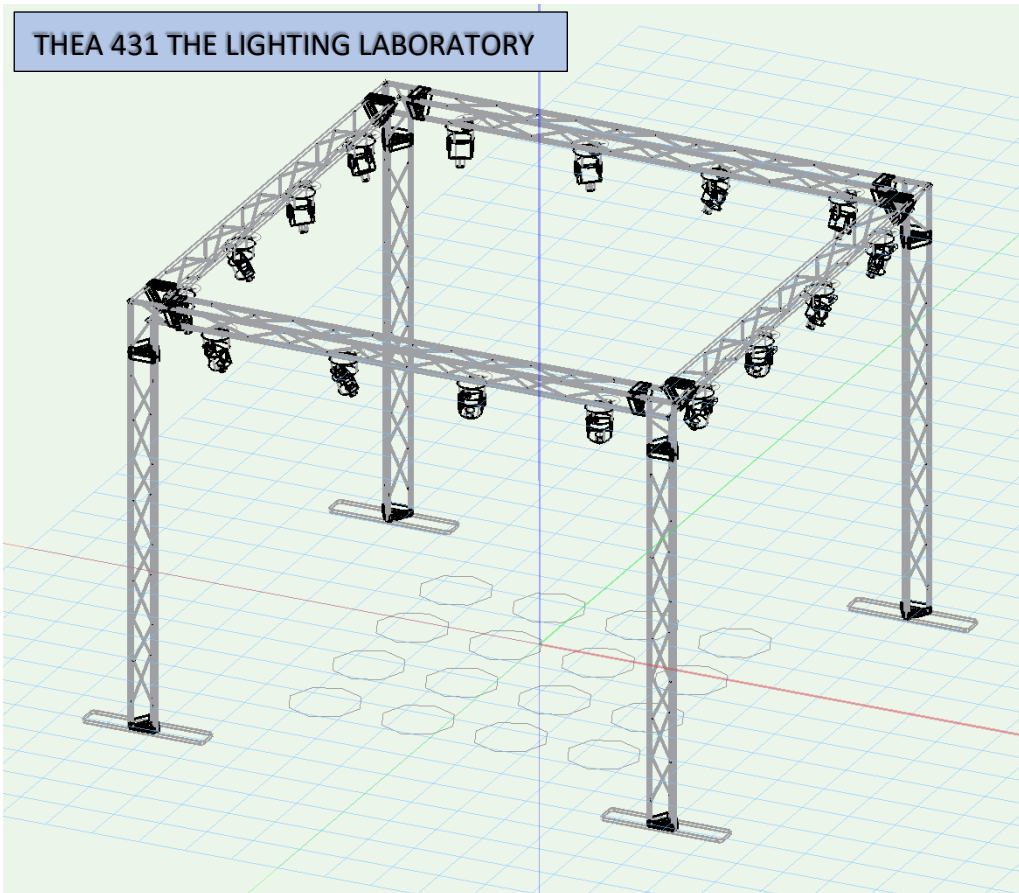
Using Fabric, Light, Music & Movement to recreate one of the most beauty occurrences in nature.

- Based on the play *Almost, Maine* and photographic research, the class will work as a group to scenically recreate the Aurora Borealis (aka The Northern Lights) in the lobby of the Krannert Center.
- Using simple fabrics, a fan or fans, subtle music and movement of light and color, each student will then create a 1-3 minute cue sequence that will be looped in the lobby of the Krannert Center.
- All three projects will be on display for public viewing from April 21st-23rd.
- Comments cards will be able for any onlookers who wish to leave feedback.

[Web Link to Aurora Borealis images](#)



THEA 431 THE LIGHTING LABORATORY



DIAGONAL FRONT ORTHO-VIEW

ALUMINUM TRIANGULAR TRUSS:

(4) x 8ft tall
 (4) x 10ft wide
 (4) x Corner Blocks
 (4) x Weighted Base
 (96) bolts, washers, nuts
 *Fully Ground supported.

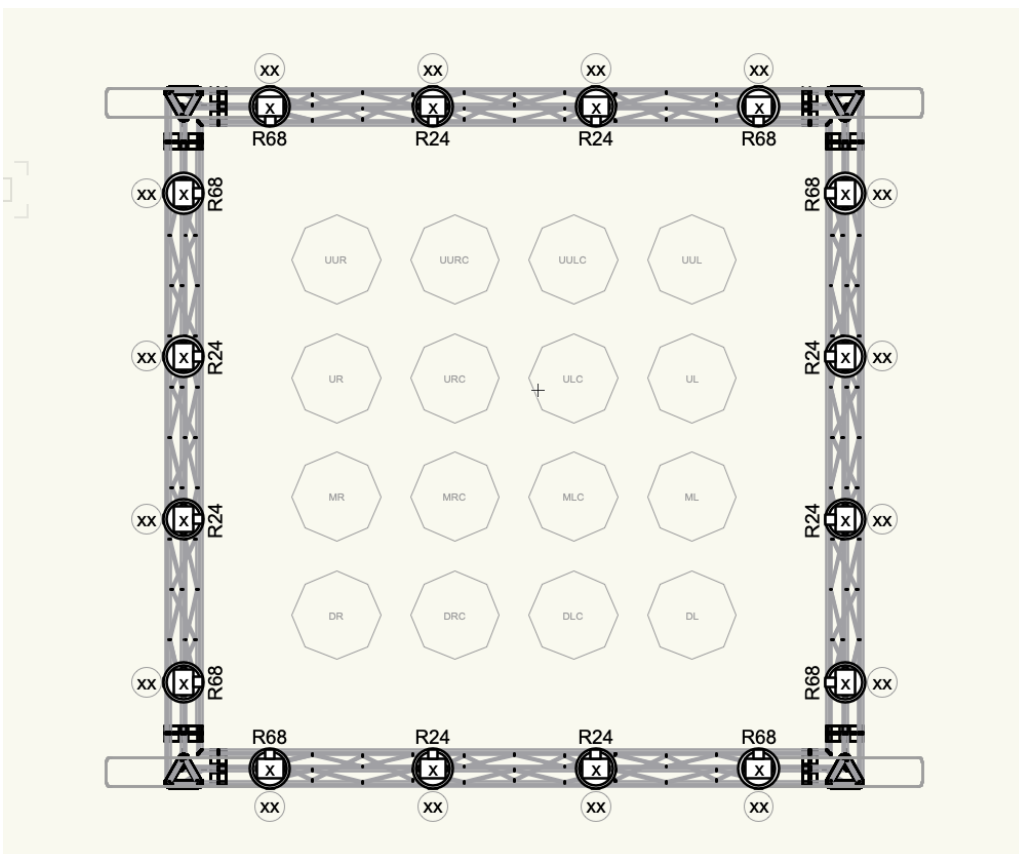
LIGHTING FIXTURES:

(16) Lixada RGBW LED Moving Head Fixture (100w max)

https://www.amazon.com/gp/product/B01DXK33FC/ref=ox_sc_act_title_5?smid=A1UQCB14RUUVVZ&psc=1

(4) Chauvet Wedge-Tri RGB LED Truss Fixture (23w max)

<https://www.chauvetdj.com/products/wedge-tri/>



OVERHEAD FOOTPRINT VIEW

OVERALL DIMENSIONS:

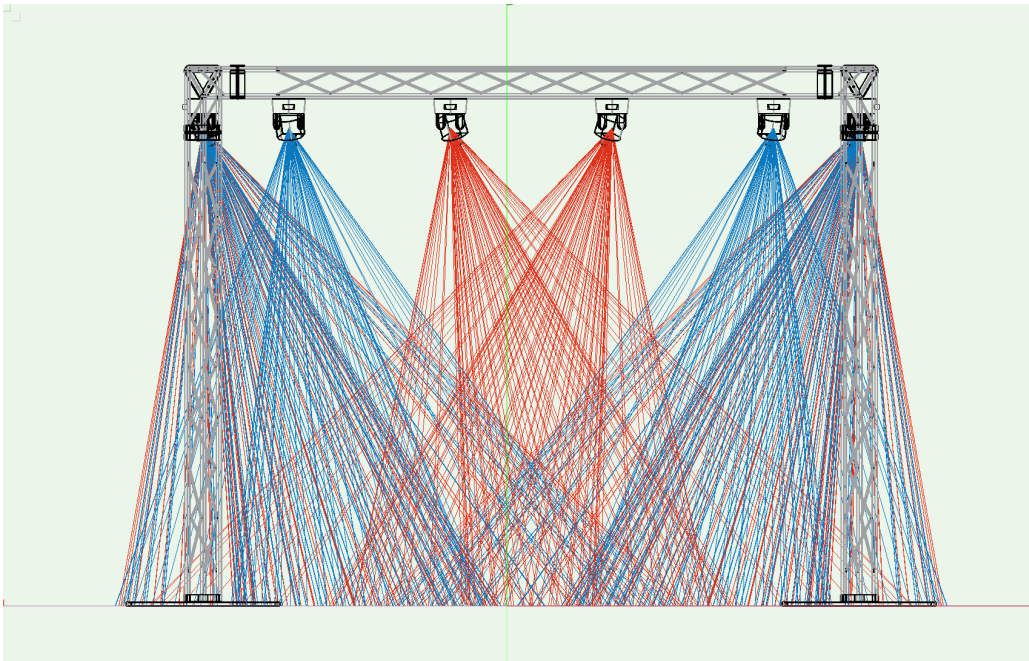
13'9" w x 11'9.5" d
 Including weighted bases.

FOCUS POINTS:

Each circle represents focal points on the stage for reference only.

POWER:

Power to be supplied by one to two 20-amp outlets within the lobby of the Krannert Center. Any cables will be secured with proper safety measures.



FRONT VIEW WITH PHOTOMETRICS

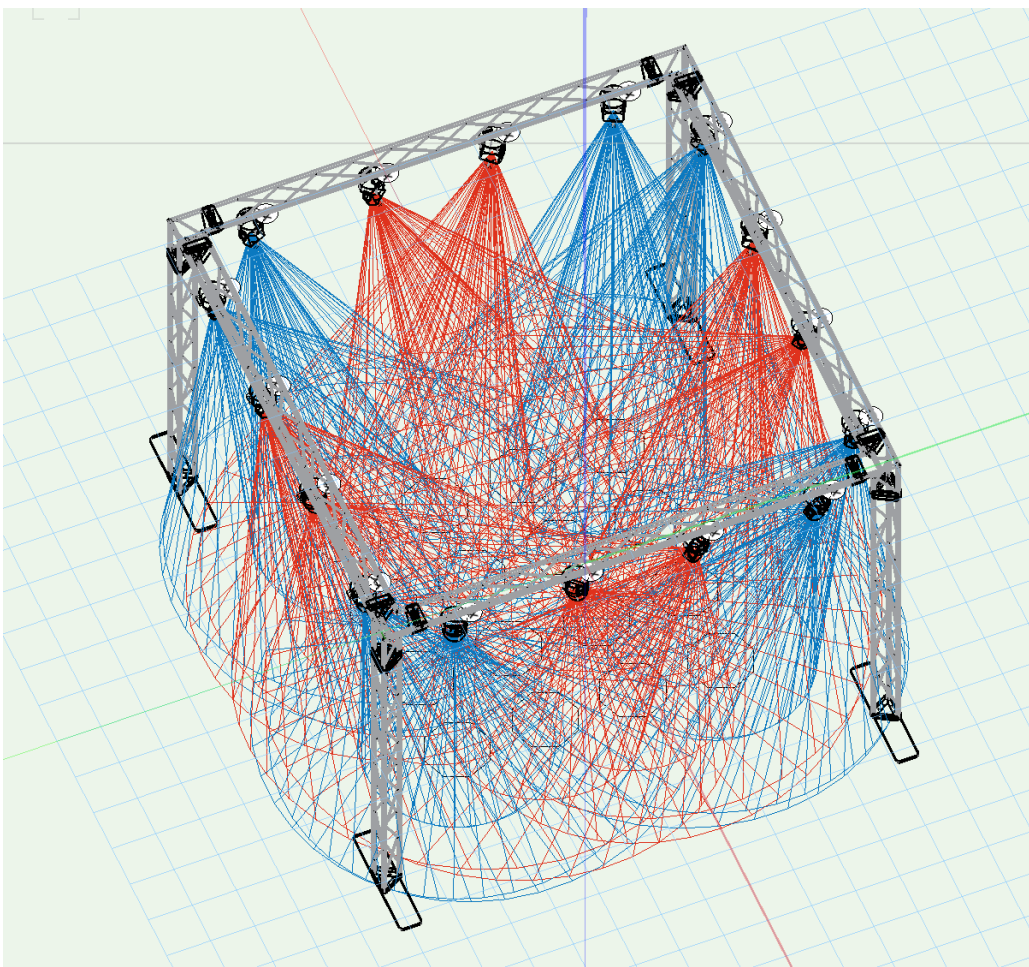
TRUSS STRUCTURE

DIMENSIONS:

11'9.5" wide
13'9" wide w/ bases

SAMPLE IMAGE:

An image of the LED moving-head wash fixtures illuminated. Any spill light is to be contained within the truss structure as to not interfere with any other activities within the KCPA lobby.



DIAGONAL FRONT ORTHO-VIEW WITH PHOTOMETRICS

SAMPLE IMAGE:

An image with all 16 moving-head LED wash fixtures lit.

COLOR MIX:

Each fixture has the capability to color mix internally using the primary colors of light (red, green, blue) and white.

MOVEMENT:

Each fixture also has the ability to pan 540° and tilt 180°.

CONTROL:

All lighting equipment will be DMX controlled via a laptop running ETC EOS software and Gadget II and USB Dongle.