

Predicting Greenhouse Gas Emissions and Soil Carbon from Changing Pasture to an Energy Crop

Benjamin D. Duval^{1,2[✉]a}, Kristina J. Anderson-Teixeira^{1[✉]b}, Sarah C. Davis^{1[✉]c}, Cindy Keogh³, Stephen P. Long^{1,2,4}, William J. Parton³, Evan H. DeLucia^{1,2,4*}

1 Energy Biosciences Institute, University of Illinois at Urbana-Champaign, Urbana, Illinois, United States of America, **2** Global Change Solutions, Urbana, Illinois, United States of America, **3** Natural Resource Ecology Laboratory, Fort Collins, Colorado, United States of America, **4** Department of Plant Biology, University of Illinois at Urbana-Champaign, Urbana, Illinois, United States of America

Abstract

Bioenergy related land use change would likely alter biogeochemical cycles and global greenhouse gas budgets. Energy cane (*Saccharum officinarum* L.) is a sugarcane variety and an emerging biofuel feedstock for cellulosic bio-ethanol production. It has potential for high yields and can be grown on marginal land, which minimizes competition with grain and vegetable production. The DayCent biogeochemical model was parameterized to infer potential yields of energy cane and how changing land from grazed pasture to energy cane would affect greenhouse gas (CO₂, CH₄ and N₂O) fluxes and soil C pools. The model was used to simulate energy cane production on two soil types in central Florida, nutrient poor Spodosols and organic Histosols. Energy cane was productive on both soil types (yielding 46–76 Mg dry mass·ha⁻¹). Yields were maintained through three annual cropping cycles on Histosols but declined with each harvest on Spodosols. Overall, converting pasture to energy cane created a sink for GHGs on Spodosols and reduced the size of the GHG source on Histosols. This change was driven on both soil types by eliminating CH₄ emissions from cattle and by the large increase in C uptake by greater biomass production in energy cane relative to pasture. However, the change from pasture to energy cane caused Histosols to lose 4493 g CO₂ eq·m⁻² over 15 years of energy cane production. Cultivation of energy cane on former pasture on Spodosol soils in the southeast US has the potential for high biomass yield and the mitigation of GHG emissions.

Citation: Duval BD, Anderson-Teixeira KJ, Davis SC, Keogh C, Long SP, et al. (2013) Predicting Greenhouse Gas Emissions and Soil Carbon from Changing Pasture to an Energy Crop. PLoS ONE 8(8): e72019. doi:10.1371/journal.pone.0072019

Editor: Chenyu Du, University of Nottingham, United Kingdom

Received: December 7, 2012; **Accepted:** July 10, 2013; **Published:** August 21, 2013

Copyright: © 2013 Duval et al. This is an open-access article distributed under the terms of the Creative Commons Attribution License, which permits unrestricted use, distribution, and reproduction in any medium, provided the original author and source are credited.

Funding: This research was funded by the Energy Bioscience Institute. The funders had no role in study design, data collection and analysis, decision to publish, or preparation of the manuscript.

Competing Interests: Please note that Duval, Long and DeLucia are affiliated with a company, Global Change Solutions LLC. This affiliation does not represent a "competing interest" or alter the authors' adherence to all the PLOS ONE policies on sharing data and materials, as detailed online in the guide for authors.

* E-mail: delucia@illinois.edu

^{✉a} Current address: Dairy Forage Research Center, United States Department of Agriculture, Agricultural Research Service, Madison, Wisconsin, United States of America

^{✉b} Current address: Conservation Ecology Center, Smithsonian Conservation Biology Institute, National Zoological Park, Front Royal, Virginia, United States of America

^{✉c} Current address: Voinovich School for Leadership and Public Affairs, Ohio University, Athens, Ohio, United States of America

Introduction

Land use has a pervasive influence on atmospheric greenhouse gas (GHG) concentrations and thereby on climate [1,2,3]. Carbon emissions from land use change, often to make way for agriculture, have contributed substantially to anthropogenic increases in the atmospheric CO₂ concentration [2]. For example, C emissions from tropical deforestation have been estimated at 10.6±1.8 Pg CO₂ per year between 1990 and 2007, equal to ~40% of global fossil fuel emissions [3]. Likewise, it is estimated that 40–52 Pg CO₂ have been released by plowing high-C native prairie soils [4]. Agricultural practices are important to global GHG budgets, with agroecosystems contributing ~14% of global anthropogenic GHG emissions [1]. Agricultural practices can also reduce GHG emissions and enhance soil carbon, and have the potential to mitigate climate change [4,5].

Land use and land management changes associated with the emerging bioenergy industry are likely to have substantial impacts on global GHG budgets [6,7,8]. A change from fossil fuels to an

energy economy more reliant on plant-derived biofuels has the potential to reduce GHG emissions [9]. The prospect of lowering emissions is one factor leading to the United States' mandate to produce 136 billion liters of renewable fuel by 2022 [10]. However, meeting this mandate will require substantial land area [11,12], which implies potentially major changes to regional biogeochemical cycling [12,13].

Corn grain (*Zea mays*) is the dominant crop used for ethanol production in the US [14]. However, the ability of corn ethanol to reduce GHG emissions is questionable [15,16], and corn production exacerbates nitrogen pollution and other environmental problems [17–19]. Of particular concern is the possibility that diversion of corn for ethanol production will increase global grain prices and trigger agricultural expansion and deforestation elsewhere in the world [7]. The emerging commercial technology to convert ligno-cellulose to ethanol could redress the reliance on corn grain as an ethanol feedstock [20]. This could be particularly beneficial if cellulosic biofuel crops are grown on land that is not important for food production, while having lower GHG emissions

than traditional row-crop agriculture [21,22]. Therefore, considerable research has focused on understanding the soil C and greenhouse gas consequences of replacing traditional agriculture used for bioenergy with perennial grasses like switchgrass (*Panicum virgatum* L.), Miscanthus (*Miscanthus x giganteus* J. M. Greef & Deuter ex Hodk. & Renvoize), or restored prairie cropping systems in the Midwestern United States [17,23–27].

The Southeastern United States holds particular potential for cultivation of second-generation biofuel crops [28,29]. In comparison with the corn-soy and wheat belts of the Midwestern US, this region’s longer growing season, high precipitation and relatively lower land costs make it attractive for biofuel crop production. However, far less is known about the biogeochemical consequences of land-use change to biofuel crop production in this region.

Energy cane, a promising crop for ligno-cellulosic fuel production, is a variety of sugarcane (*Saccharum officinarum*) that is higher yielding, more cold tolerant and has lower sucrose content than commercially produced sugarcane [28]. Because of its lower sugar concentration, it has not been widely cultivated, but has been of interest commercially as a genetic stock for improving cold tolerance in higher sucrose sugarcane strains [28]. With the development of ligno-cellulosic ethanol conversion technologies, sucrose concentration is less important for ethanol production, and energy cane could become an important biofuel feedstock as yields are high, ranging from 25–74 Mg·ha⁻¹·yr⁻¹ dry mass (Table 1).

Florida is the largest sugarcane producing state in the US and is therefore a likely location for large-scale energy cane production [30]. Currently, 466,000 hectares of land in Florida are used for low-intensity grazing, and converting some portion of this land could provide an option for growing energy cane [31,32]. However, it is unknown if converting pasture to cultivated land will affect GHG exchange with the atmosphere and soil carbon storage. More frequent soil disturbance and the presence of larger quantities of litter from growing energy cane could increase CO₂ efflux to the atmosphere [33,34], while removing cattle from the landscape will displace methane (CH₄) efflux [35]. If fields are fertilized, nitrous oxide (N₂O) emissions may increase because of greater substrate availability for denitrifying microbes [36], and

indeed, high rates of N₂O efflux have been measured from sugarcane grown on highly fertilized soils in Australia [37]. However, considering the entire suite of greenhouse gases, there may be an overall reduction in GHG flux due to the offset provided by greater atmospheric carbon uptake into the crop.

The region of Florida where energy cane is likely to be grown has two distinct soil types. The most common soils are Spodosols, which are low nutrient and low organic matter sands requiring significant fertilizer to maintain agricultural productivity [38]. Substantial sugarcane production in Florida also occurs on Histosols, which are high organic matter “mucks” that are not typically fertilized, as production on these soils can be maintained by N mineralization from organic matter [39]. The cultivation of Histosols began by draining swamplands, where organic matter had accumulated under anaerobic conditions. Drainage accelerates decomposition and further cultivation of these organic soils is associated with rapid oxidation of organic matter, resulting in significant soil C loss and emissions of CO₂ and N₂O to the atmosphere [9,40,41].

Theoretical [13,25] and empirical research [42,43] indicate that the conversion of land in the rain-fed Midwest currently used to produce corn for ethanol to perennial biofuel feedstocks such as switchgrass or Miscanthus (a close relative of sugarcane) would greatly reduce or reverse the emission of GHG to the atmosphere and rebuild depleted carbon stocks in the soil. Prior studies with Miscanthus in Europe have measured substantial decreases in nitrogen use, and large increases in soil biomass and organic matter relative to other agricultural land uses [44,45]. There have been no experimental studies that address how changing a landscape to cultivate energy cane will impact GHG emissions and soil C stocks. This is addressed here by using the process-based biogeochemical model DayCent to run *in silico* experiments to ask how land use change from pasture to energy cane production changes ecosystem GHG flux and soil C storage. We test the hypotheses that converting pastures to energy cane will lead to reductions in GHG flux to the atmosphere and increase soil C stocks, and that soil type is an important modulator of that change.

Methods

Plant and Soil Analyses

To parameterize the DayCent model, plants and soils were collected on private land in Highlands County, Florida (27° 21’ 49” N, 81° 14’ 56” W) in May 2011. Paired 4-m² plots (n = 3) were randomly located in energy cane fields that had been recently (<2 months) converted from pasture and in adjacent non-cultivated pasture on both Spodosols (hyperthermic Arenic Alaquods) and Histosols (hyperthermic Histic Glossaqualfs). We harvested all aboveground biomass from each plot. Soil samples were taken from the pastures in areas not yet under energy cane cultivation. Three soil cores to a depth of 1 m were extracted from each plot with a 1.75-cm diameter wet sampling tube (JMC product # PN010, Newton, IA). Soil cores were separated by depth (0–30 cm, >30 cm). Plant material and soils were oven dried at 65°C (plant material) and 105°C (soils) until they reached constant mass. Dried soils were coarse ground with a mill (model F-4, Quaker City, Phoenixville, PA), and then fine ground with a coffee grinder (Sunbeam Products Inc., Boca Raton, FL). Total C and N content may have been slightly underestimated from the dried Histosols due to volatilization, but the values we measured (Table 1) fall well within the range reported by NRCS Web Soil Survey [46]. Plant material was ground to pass a 425-µm mesh (Wiley mill, Thomas Scientific, Swedesboro, NJ, USA). Plant and soil subsamples

Table 1. Input parameters (mean and one standard error of the mean; SEM) for carbon and nitrogen concentration of energy cane and soils collected from the Highlands Ethanol farm, Highlands County, Florida.

		%C		%N	
		Mean	SEM	Mean	SEM
Energy cane	Live leaves	43.68	0.22	1.80	0.18
	Dead leaves	39.77	0.22	0.52	0.03
	Stalks	41.18	0.33	0.87	0.10
Soils	Soil Depth				
Histosols	0–60 cm	7.77	2.48	0.50	0.20
	60–100 cm	7.77	2.48	0.50	0.20
Spodosols	0–30 cm	0.77	0.17	0.04	<0.01
	30–60 cm	0.36	0.03	0.02	0.01
	60–100 cm	0.36	0.03	0.02	0.01

When site-specific data were not available, plant information was used from reference [65], and soil data were collected from the NRCS Web Soil Survey (<http://websoilsurvey.nrcs.usda.gov/>). doi:10.1371/journal.pone.0072019.t001

Table 2. Site information for studies used in DAYCENT model validation.

Site	Lit. Yield	Model Yield	Max. Temp.	Min. Temp.	Precipitation	Latitude	Longitude	Reference
Auburn, AL	26.1	25.4	24.2	9.8	1160	32.67	-85.44	Woodard and Prine, 1993
Belle Glade, FL	25.0	28.3	27.8	16.4	1378	26.68	-80.67	Korndorfer, 2009
EREC, FL	51.3	43.5	29.1	17.7	1181	26.65	-80.63	Gilbert et al., 2006
Gainesville, FL	35.6	27.3	27.0	13.7	1123	29.68	-82.27	Woodard and Prine, 1993
Hendry, FL	39.2	55.9	28.4	18.3	1362	27.78	-82.15	USDA, 2011
Hillsboro, FL	60.7	62.5	28.5	18.3	1547	27.90	-82.49	Gilbert et al., 2006
Houma, LA (1st ratoon)	36.6	38.2	25.2	14.8	500	29.57	-90.65	Legendre and Burner, 1995
Houma, LA (2nd ratoon)	34.9	37.6	25.2	14.8	500	29.57	-90.65	Legendre and Burner, 1995
Hundley, FL	73.5	62.0	28.5	18.1	1457	26.30	-80.16	Gilbert et al., 2006
Jay, FL (plant cane)	35.8	33.6	26.9	16.4	1321	28.65	-80.82	Woodard and Prine, 1993
Jay, FL (1st ratoon)	27.8	32.8	26.9	16.4	1321	28.65	-80.82	Woodard and Prine, 1993
Lakeview, FL	71.3	62.5	28.5	17.4	1275	26.30	-80.15	Gilbert et al., 2006
Hidalgo, TX	34.6	42.5	28.7	18.1	576	26.17	-97.93	Weidenfeld, 1995
Ona, FL (1st ratoon)	40.5	38.1	28.6	16.0	1160	27.48	-81.92	Woodard and Prine, 1993
Ona, FL (2nd ratoon)	30.2	31.6	28.6	16.0	1160	27.48	-81.92	Woodard and Prine, 1993
Pahokee, FL	60.5	65.5	28.4	17.5	1269	26.82	-80.66	Glaz and Ulloa, 1993
Palm Beach, FL	32.3	35.4	29.0	16.6	851	26.67	-80.15	USDA, 2011
Quincy, FL (1st ratoon)	26.3	25.1	25.8	12.9	1445	30.59	-84.58	Woodard and Prine, 1993
Quincy, FL (2nd ratoon)	27.8	21.7	25.8	12.9	1445	30.59	-84.58	Woodard and Prine, 1993
Shorter, AL	26.4	25.4	24.9	10.9	1119	32.40	-85.94	Sladden et al., 1991
Sundance, FL	42.1	43.5	28.6	17.5	1303	26.60	-80.87	Gilbert et al., 2006

Yield values from the literature and modeled yields for energy cane and sugarcane represent total aboveground biomass expressed as Mg ha⁻¹ on a dry mass basis. Climate variables include mean annual maximum and minimum temperature (°C) and mean annual precipitation (mm).
doi:10.1371/journal.pone.0072019.t002

within each plot were combined, and C and N concentrations were measured for depth-stratified soil samples (Table 1) and total above ground biomass with a flash combustion chromatographic separation elemental analyzer (Costech 4010 CHNSO Analyzer, Costech Analytical Technologies Inc. Valencia, CA). The instrument was calibrated with acetanilide obtained from Costech Analytical Technologies, Inc. Other physical soil attributes, including texture, bulk density and water holding capacity were obtained from the NRCS Web Soil Survey [46] for Highlands County, Florida.

The DayCent Model

The DayCent model [47,48] was developed to simulate ecosystem dynamics for agricultural, forest, grassland and savanna ecosystems [49–51]. The model is a daily time step version of the Century model [52,53], using the same soil carbon and nutrient cycling submodels to simulate soil organic matter dynamics (C and N) and nitrogen mineralization. DayCent uses more mechanistic submodels than Century to simulate daily plant production, plant nutrient uptake, trace gas fluxes (N₂O, CH₄), NO₃ leaching, and soil water and temperature [48,54–58].

The DayCent soil organic matter model is widely used to simulate the impacts of management practices on soil carbon dynamics and nutrient cycling. Specifically, the soil organic matter submodel has been used to simulate the impacts of soil tillage practices; no-tillage, minimum tillage and conventional tillage [59,60], crop rotations [59], and biofuel crops; woody biomass, switchgrass (*Panicum virgatum*), Miscanthus (*Miscanthus X giganteus*), and sugarcane [13,61] on soil carbon dynamics for agricultural systems. These studies test model performance against observed

data and demonstrate general success in simulating changes in soil carbon levels associated with management practices.

The soil trace gas submodel has been extensively tested using observed soil CH₄ and N₂O data sets from agricultural and natural ecosystems, and once parameterized with plant production data, provides accurate predictions of trace gas fluxes. Specifically, DayCent has successfully simulated the observed impacts of N fertilizer additions and cropping systems [50,58,59] on soil N₂O and CH₄ fluxes. The model results and observed data sets demonstrate that increasing N fertilizer levels increases soil N₂O fluxes and that soil N₂O fluxes are much lower for perennial crops as compared to annual crops.

The DayCent model has been used extensively to simulate grassland and crop yields [50,58,59,62], and to evaluate the environmental impacts of growing crops. Adler et al. [63] used the DayCent model to simulate net greenhouse gas fluxes (soil C status and soil CH₄ and N₂O fluxes) associated with the use of corn, soybeans, alfalfa, hybrid poplar, reed canary grass and switchgrass for biofuel energy production in Pennsylvania. Davis et al. [25] used the DayCent model to simulate the environmental impacts of growing switchgrass and Miscanthus in Illinois and compared simulated plant production for switchgrass and Miscanthus with observed yield data. The authors also compared the net soil greenhouse gas fluxes (soil C changes and soil CH₄ and N₂O fluxes) associated with growing switchgrass and Miscanthus and growing corn and soybeans. Davis et al. [13] recently used the DayCent model to simulate the environmental impact of replacing the corn currently grown for ethanol production in the Corn Belt with perennial grasses (Miscanthus and switchgrass) for second-generation biofuel production. The authors found that the

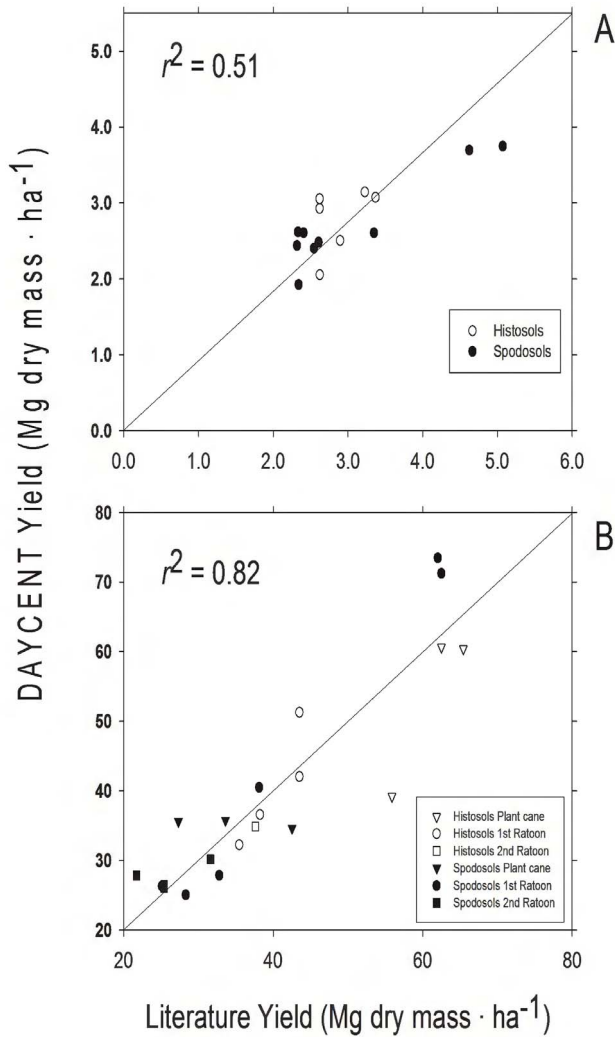


Figure 1. Regression analysis used in DayCent model validation. Model output for dry mass yield was compared to literature values for A) pasture yield values from the USDA-NASS database, B) sugarcane and energy cane dry mass yield. Data points are compared to a 1:1 line.
doi:10.1371/journal.pone.0072019.g001

DayCent model successfully predicted corn, Miscanthus, and switchgrass biomass production for U.S. sites with multiple N fertilizer levels. They also showed that the DayCent model successfully simulated observed annual soil N₂O fluxes from corn and switchgrass grown with multiple N fertilizer levels and showed that soil N₂O fluxes are much lower for fertilized switchgrass than for corn.

Furthermore, the basis for the DayCent model, Century, has been used to simulate sugarcane production in Brazil [61,64] and Australia [65]. These authors show that the Century/DayCent soil organic matter sub-model can correctly simulate the impacts of fertilizer, and organic matter additions on soil carbon levels and surface litter decay.

Model Parameterization

Energy cane is a variety of sugarcane, and thus parameterizing DayCent for this crop required only minor changes to the previously published input data used for sugarcane [61,65]. Energy cane differs from sugarcane in that it has increased cold

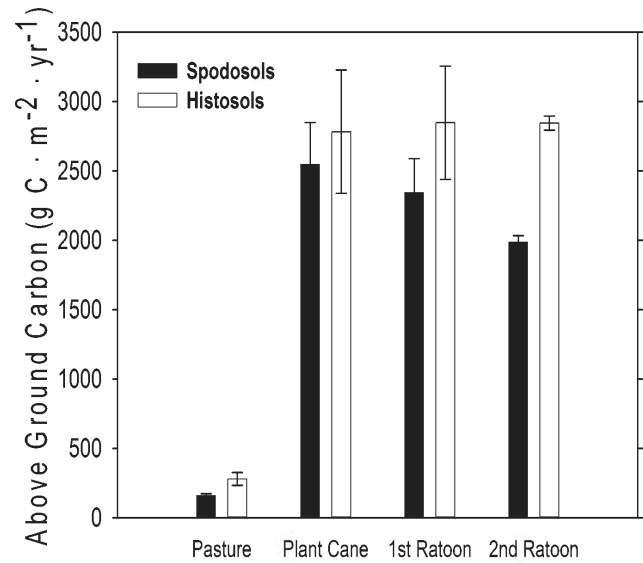


Figure 2. Modeled above ground production of grazed pasture and energy cane in Highlands County, Florida. Values are mean above ground carbon (g C · m⁻² · yr⁻¹, ± SD) for 15 years in pasture, and for 5 × 3-year ratoon cycles in energy cane (each bar represents the average of 5 values, one for each year for each stage in the planting cycle).
doi:10.1371/journal.pone.0072019.g002

tolerance, decreased sucrose content, and higher cellulose content. We adjusted parameters based on direct measurement of energy cane tissue traits described above. The principal changes from sugarcane to energy cane were reducing the minimum C:N ratio of leaves from 28.6 to 22.1 and changing the C:N of stems from 160 to 30.5. Because of this change in C:N, the parameter for C allocation to stems in DayCent also was modified (from 60% to 40%), to reflect the lower C content of stems relative to N for energy cane versus the previously modeled sugarcane parameters [65]. Bahiagrass (*Paspalum notatum* Flueggé) pasture was simulated using the existing DayCent model parameters for warm season grasses [66,67].

Histosols are challenging to model as organic matter and C content typically are uniform throughout the soil profile [68], but they also are known to subside because of oxidation of the highly labile organic C pools characteristic of these soils [69]. This subsidence was calculated from the modeled rate of organic matter loss and bulk density. DayCent simulates soil C flux to a depth of 30 cm [47], so as soil was lost with subsidence new soil and organic matter became part of this upper 30 cm column from below. This assumes that loss only occurred in the upper 30 cm, which is reasonable since this is the disturbed and aerated part of the soil. The C and N added from low in the soil profile was calculated from the rate of subsidence and the measured elemental contents and bulk density of the soil that was below 30 cm, when sampled, which is at time zero in our model. However, model output calculates GHG and soil C to soil depths to 30 cm.

Model Validation

Literature values of aboveground production (dry mass) for grazed pasture, sugarcane and energy cane (Table 2) were used to validate DayCent. Validation focused on aboveground biomass production because this variable has been measured widely across a range of sites. While there were insufficient data on trace gas flux or changes in soil C in sugarcane or energy cane for validation of

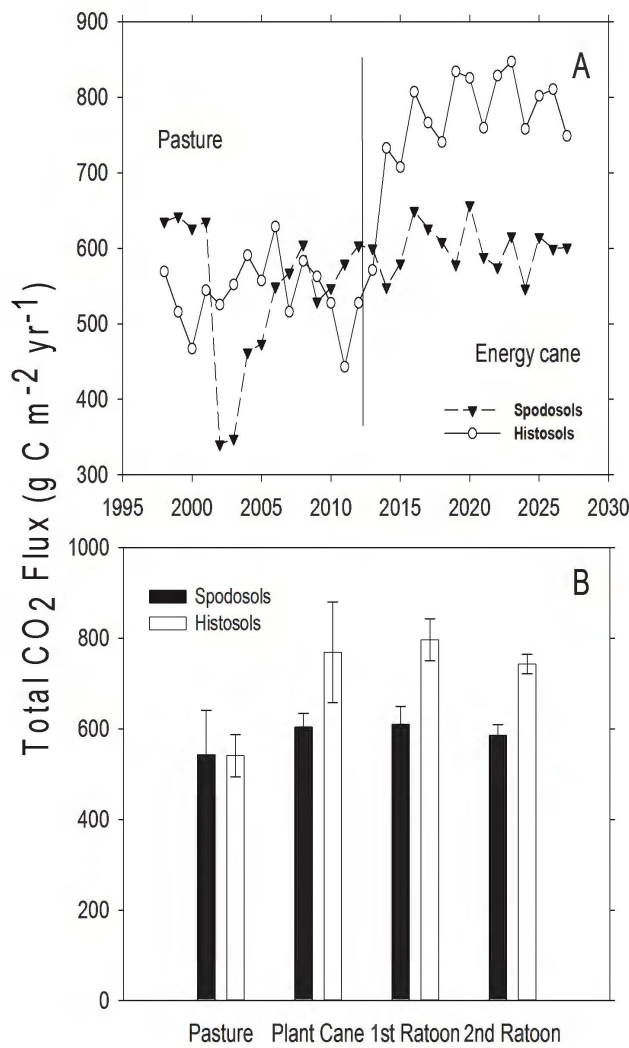


Figure 3. Modeled total soil CO₂ flux from pasture and land converted to energy cane in Highlands County, Florida. A) Total annual soil CO₂ flux (expressed as g C·m⁻²·yr⁻¹). Dashed line represents year of land use conversion from pasture to energy cane. B) Mean total soil CO₂ flux (g C·m⁻²·yr⁻¹, ± SD) for 15 years in pasture, and for 5, 3-year ratoon cycles in energy cane (each bar represents the average of 5 values, one for each year for each stage in the planting cycle). doi:10.1371/journal.pone.0072019.g003

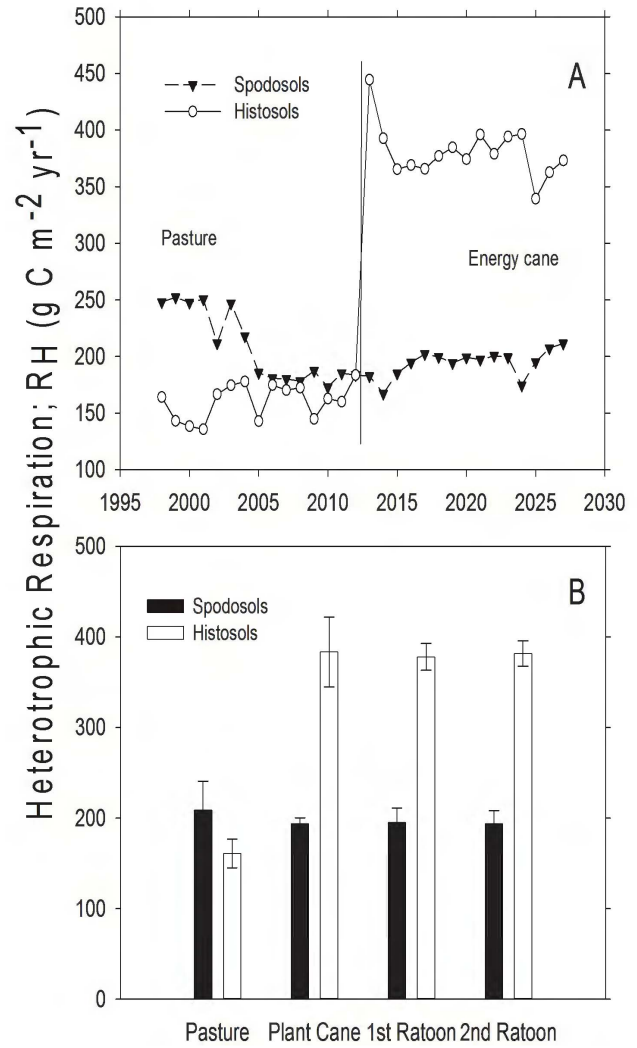


Figure 4. Modeled heterotrophic respiration (R_H) from pasture and land converted to energy cane in Highlands County, Florida. A) Total annual heterotrophic respiration (g C·m⁻²·yr⁻¹). Dashed line represents year of land use conversion from pasture to energy cane. B) Mean heterotrophic respiration (g C·m⁻²·yr⁻¹, ± SD) for 15 years in pasture, and for 5, 3-year ratoon cycles in energy cane (each bar represents the average of 5 values, one for each year for each stage in the planting cycle). doi:10.1371/journal.pone.0072019.g004

these variables, validation based on productivity for other crops reliably predicts trace gas flux [59,60,63,70–72].

We compiled a literature database of 17 sites that had reliable data on sugarcane and energy cane yield. There were also pasture productivity data for 15 of those sites [73]. In some instances we were able to contact researchers directly to access unpublished data (Table 2). The geographic range of sites represents the breadth of sugarcane production in the continental United States, and the potential range of energy cane production on currently grazed pastures. For all sites, daily weather data inputs (minimum and maximum temperature, daily precipitation) from 1980 to 2002 were obtained from the DayMet database [74]. The model was run using the DayCent growing degree-day subroutine to determine plant emergence, senescence and death, based on plant phenological characters and daily weather data. Soil data for the validation sites were obtained from the NRCS Web Soil Survey [75]. Using the same schedule of management events used for the

in silico experiments (described below), DayCent was run with site-specific soil and weather data for each sites. The fit of modeled to measured above ground dry mass production (Mg dry matter ha⁻¹) of our simulations of grazed pasture and energy cane were separately tested via linear regression, using the linear model function in R [76].

Initial Simulation Conditions

A “spin-up” period in DayCent based on historical land use and vegetation type was used to set initial soil conditions. The dominant, historic vegetation type for this area of south-central Florida was savanna, with a mixture of grasses and several species of scrub-oak, or sawgrass for the swamp areas [77]. A mix of perennial C₃ grasses species and symbiotic N₂ fixing plants, were used as initial conditions for the savanna simulation (initial vegetation type “savanna” in DayCent). A period of 2000 years was simulated to obtain an initial soil C and N conditions prior to

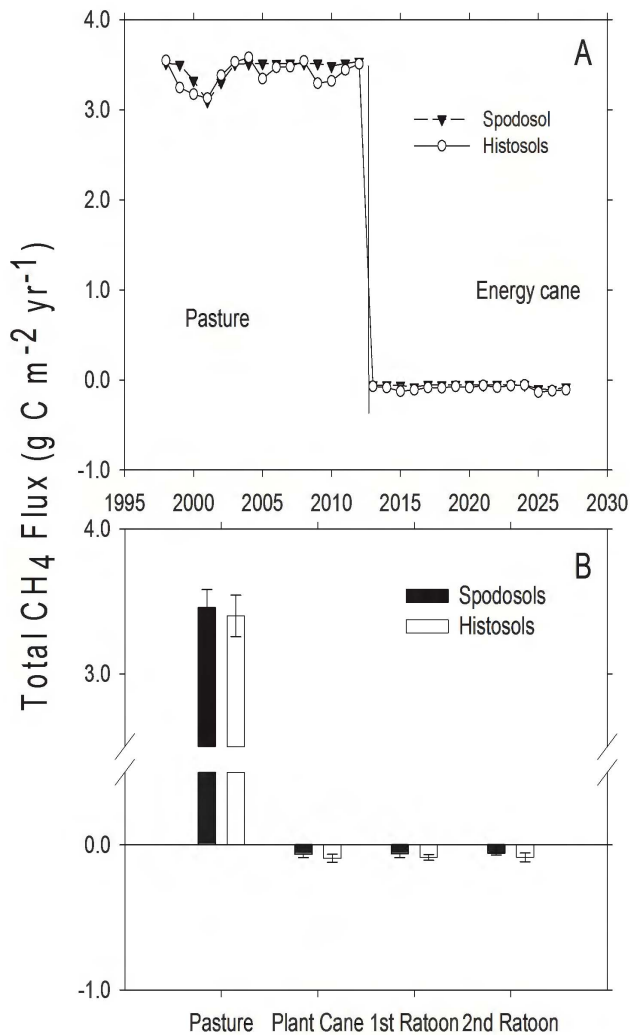


Figure 5. Modeled CH₄ flux from pasture and land converted to energy cane in Highlands County, Florida. A) Total annual CH₄ flux (g C·m⁻²). The solid vertical line represents year of land use conversion from pasture to energy cane, positive values indicate CH₄ efflux and negative values indicate CH₄ uptake. B) Mean CH₄ flux (g C·m⁻²·yr⁻¹, ± SD) for 15 years in pasture, and for 5, 3-year ratoon cycles in energy cane (each bar represents the average of 5 values, one for each year for each stage in the planting cycle). doi:10.1371/journal.pone.0072019.g005

our *in silico* experiments. The model was run for spin ups and all subsequent experiments using the growing degree-day sub-routine.

In silico Experiments

Model simulations were then run to determine the GHG soil-atmosphere exchange and change in soil C predicted for conversion of pasture to energy cane on the two dominant soil types, Spodosols and Histosols. We used daily weather data inputs (minimum and maximum temperature, daily precipitation) from 1951 to 2002, which was the longest time period available for Highlands County, Florida obtained from the DayMet database [74]. This weather file is used by DayCent to create a mean and standard deviation of weather parameters, thus the more weather data available for a given site, the more accurately the variability of a site will be captured by the model.

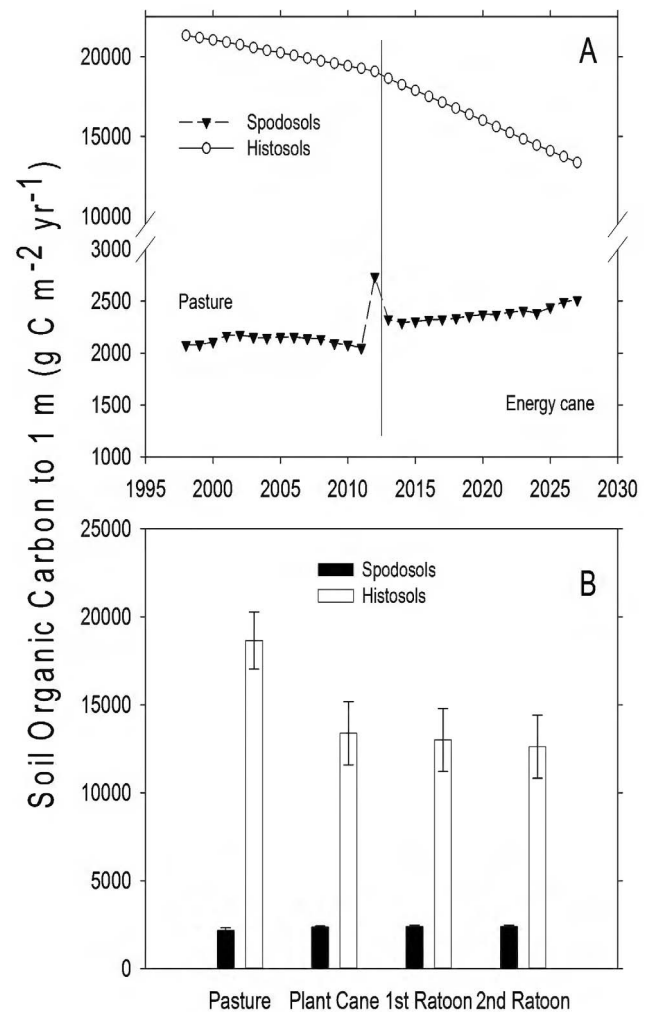


Figure 6. Changes in total soil organic C from pasture and land converted to energy cane in Highlands County, Florida. A) Total annual SOC flux (g C·m⁻²). The solid vertical line represents year of land use conversion from pasture to energy cane. B) Mean SOC flux (g C·m⁻²·yr⁻¹, ± SEM) for 15 years in pasture, and for 5, 3-year ratoon cycles in energy cane (each bar represents the average of 5 values, one for each year for each stage in the planting cycle). doi:10.1371/journal.pone.0072019.g006

To initiate the experimental simulations, in 1998 we converted the savanna by removing all above ground biomass and plowing to a depth of 30 cm. A landscape conversion to a grazed Bahiagrass (*Paspalum notatum* Flueggé) ecosystem was then simulated. Bahiagrass is a common forage grass for this part of Florida that would be considered “improved pasture”, although usually not fertilized or irrigated [78]. We simulated grazing in our modeling experiment by annually removing 10% of live shoot and 1.0% of standing dead shoots. Prior to planting energy cane, another plow event to 30 cm was initiated to remove the pasture vegetation and simulate the physical land use change.

The simulated cycle of energy cane planting and harvest was based on the sugarcane literature [65,79,80] and discussions with University of Florida and USDA sugarcane agronomists [81,82]. In the simulations, energy cane was planted in January of the first year (2013), followed by a two-year ratoon (crop regenerated from remaining biomass) from which 80% of the above ground biomass was harvested in December. At the end of the second ratoon, the crop was removed and the land plowed before planting a new

Table 3. Modeled ecosystem carbon, nitrogen and greenhouse gas fluxes after converting pasture to energy cane on nutrient poor Spodosols and organic matter rich Histosols.

	Spodosols			Histosols		
	Pasture	Energy cane	Δ	Pasture	Energy cane	Δ
SOC (g C·m ⁻²)	2736	2513	-224	16087	10373	-5715
Nitrogen Mineralization (g N·m ⁻²)	134	203	69	216	293	77
Heterotrophic Respiration (g C·m ⁻²)	3130	2913	-218	2413	5715	3302
Total Soil CO ₂ Efflux (g C·m ⁻²)	8148	8993	845	8111	11540	3429
CH ₄ (g CO ₂ eq·m ⁻²)	2980	-33	-3013	2958	-46	-3004
N ₂ O (g CO ₂ eq·m ⁻²)	214	649	435	6713	1742	-4970
Total System C Flux (g CO ₂ eq·m ⁻²)	-1159	-2812	-1653	-1367	924	2291
Total Greenhouse Gas Flux (g CO ₂ eq·m ⁻²)	2035	-2196	-4231	8304	2620	-5684

Greenhouse gas and N mineralization values are the sum of values from pasture 15 years prior to conversion to energy cane and the sum values for 15 years following the conversion to energy cane. Positive values indicate a flux to the atmosphere and negative values indicate uptake from the atmosphere by the ecosystem. Soil organic matter values are the differences between the last year of energy cane production and the last year of pasture. Total GHG values are the sums of CH₄, N₂O and total system C flux (calculated in DayCent as the difference between all C uptake and storage versus efflux from respiration) expressed as CO₂e. Differences (Δ) represent the values for energy cane minus pasture.

doi:10.1371/journal.pone.0072019.t003

plant crop. This cycle of ratooning and planting was repeated in the simulation for fifteen years following conversion from pasture; i.e. five cycles of three years each. This three-year planting cycle is typical for sugarcane production in Florida [83,84].

Irrigation events were scheduled every month throughout the dry season, and every two months during the rainy season to maintain soil water at field capacity. Fertilizer (NH₄⁺ - NO₃⁻) was applied in mid February and mid June of each year of the simulation, at a rate of 102 kg N ha⁻¹ per fertilization event for Spodosols. No fertilizer was added to the organic rich Histosols. This fertilization schedule was based on studies that suggest that a split fertilization regime at this rate maximizes sugarcane yield, and that fertilizing above this level does not increase yield but increases N₂O efflux [38,65,85]. The input files used to drive DayCent (e.g. schedule files, plant input parameters, and soil input files) are available online [86].

Calculations and Statistical Analyses

We summed daily GHG and soil C fluxes from DayCent to calculate yearly fluxes and report those in g C or N·m⁻² yr⁻¹, with the exception of total GHG values which are reported as CO₂ equivalents [87] and factored by warming potential (CO₂ = 1, CH₄ = 23, N₂O = 296; ref. 85). Total ecosystem C flux was calculated as the annual change in total ecosystem C storage between the beginning and end of a year and represents the net ecosystem carbon balance expressed in CO₂eq [88,89].

Because the model experiments were performed using the same site with the same weather data, but controlled for soil type, the simulations had the structure of a paired design where each year was a replicate [90]. We therefore used paired t-tests to determine differences between soil types within a plant type ($n = 15$) and between plant types within a soil type ($n = 15$). The variation reported with mean annual values represents inter-annual variation in the predicted variables. Heteroscedasticity was examined with the Fligner-Killeen test, and output data distributions, which did not meet variance assumptions, were compared with the Wilcoxon rank-sum test. The routines `t.test` (paired = TRUE) and `wilcox.test` were performed using R [76,90].

Because of the large number of pair-wise comparisons of our model results, the False Discovery Rate (FDR) test was used to account for multiple comparisons. The FDR test is less conser-

vative than a P -value adjustment such as the Bonferroni correction, and determines the probability of a Type I error. We calculated a FDR of 0.024 for our matrix of tests, and therefore justified the use of multiple paired t-tests without P -value adjustment [91].

Results

Predicted harvested yields for both pasture and energy cane in our validation sites agreed well with measured values from the literature (Pasture: $r^2 = 0.52$, Energy cane: $r^2 = 0.82$, Figure 1A & 1B), indicating that our modeled predictions provided a good representation of the productivity that drives the biogeochemical dynamics of DayCent.

For our modeled site, DayCent estimated a large increase in aboveground plant biomass production after conversion of pasture to energy cane (Figure 2); annual aboveground biomass production increased by a factor of 14 on Spodosols and by a factor of 10 on Histosols, relative to pasture. Energy cane production ranged from 1911–3153 g C m⁻² yr⁻¹ (46–76 Mg dry biomass·ha⁻¹). Predicted energy cane production remained high through the three harvests on Histosols, but declined through the modeled ratoon cycle on Spodosols (Figure 2).

There was considerable temporal variation in predicted soil CO₂ efflux from pasture in the 15 years simulated prior to the conversion to energy cane (Figure 3a). This variation was particularly evident for pasture on Spodosols and was driven primarily by variation in precipitation. Total soil CO₂ efflux was similar for pasture on both soil types, but significantly increased when averaged over 15 years after conversion to energy cane on the Histosols (Figure 3a; $t = 10.65$, d.f. = 14, $P < 0.001$). Land use conversion did not increase CO₂ efflux on Spodosols ($t = 0.58$, d.f. = 14, $P = 0.57$). Following conversion to energy cane CO₂ efflux from Histosols was significantly higher than energy cane on Spodosols (Figure 3b; $t = 9.56$, d.f. = 14, $P < 0.001$).

The conversion of land from pasture to energy cane had no significant effect on the predicted heterotrophic component of soil respiration (R_H) on Spodosols (Figure 4a), but caused a large increase in R_H from the Histosols (Figure 4a; $t = 31.86$, d.f. = 14, $P < 0.001$) and resulted in higher R_H on Histosols than Spodosols following the conversion to energy cane (Figure 4b; $t = 23.68$, d.f.

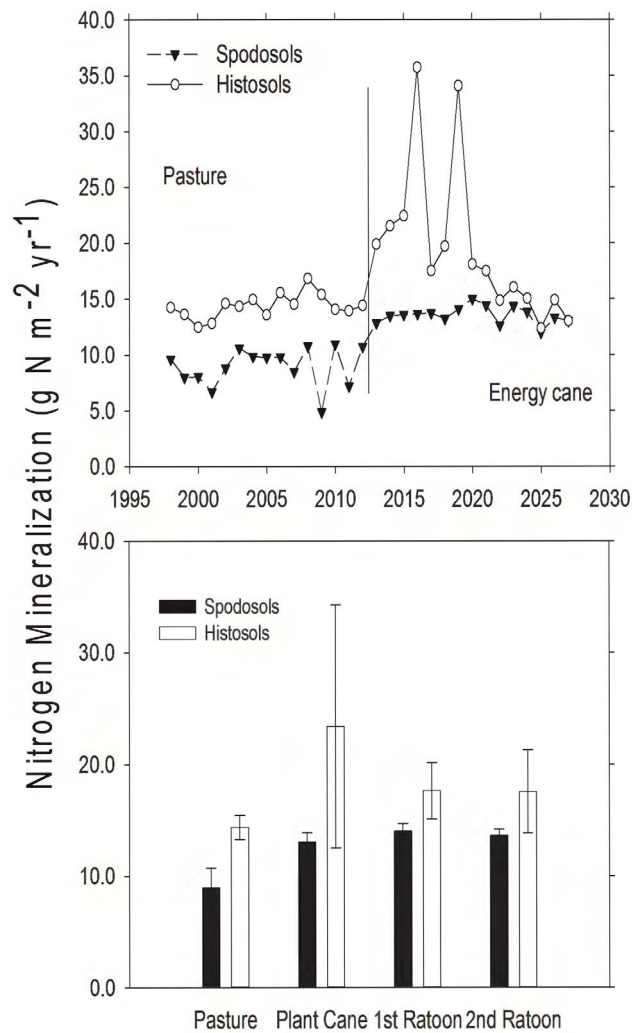


Figure 7. Modeled nitrogen mineralization rates from pasture and land converted to energy cane in Highlands County, Florida. A) Total annual N mineralization rate ($\text{g N}\cdot\text{m}^{-2}$). The solid vertical line represents year of land use conversion from pasture to energy cane. B) Mean N mineralization rate ($\text{g N}\cdot\text{m}^{-2}\cdot\text{yr}^{-1}$, \pm SD) for 15 years in pasture, and for 5, 3-year ratoon cycles in energy cane (each bar represents the average of 5 values, one for each year for each stage in the planting cycle).

doi:10.1371/journal.pone.0072019.g007

= 14, $P < 0.001$). Prior to the conversion to energy cane, modeled (R_H) was slightly higher in pasture on Spodosols than on Histosols (Figure 4; $t = 31.86$, d.f. = 14, $P < 0.001$).

On both soil types, the removal of cattle associated with the conversion of pasture to energy cane caused a substantial change in predicted CH_4 flux ($t = 185$, d.f. = 14, $P < 0.001$ on Spodosols; $t = 167$, d.f. = 14, $P < 0.001$ on Histosols; Figure 5a). Without cattle, pastures were a small CH_4 sink (0.16 – 0.60 $\text{g C}\cdot\text{m}^{-2}\cdot\text{yr}^{-1}$ uptake in Spodosols, 15 year sum = 112 $\text{g CO}_2\text{eq}\cdot\text{m}^{-2}$, 0.12 – 0.57 $\text{g C}\cdot\text{m}^{-2}\cdot\text{yr}^{-1}$ uptake for Histosols, 15 year sum = 135 $\text{g CO}_2\text{eq}\cdot\text{m}^{-2}$). Introducing cattle at stocking rates and grazing intensity typical for this region (1 head cattle $\cdot\text{ha}^{-1}$; ref. 31), caused pasture on both soil types to be a substantial source of CH_4 to the atmosphere (Figure 5).

Changes in vegetation and management practices altered soil organic carbon (SOC), and these changes were particularly evident on the Histosols (Table 2; Figure 6). Histosols had a

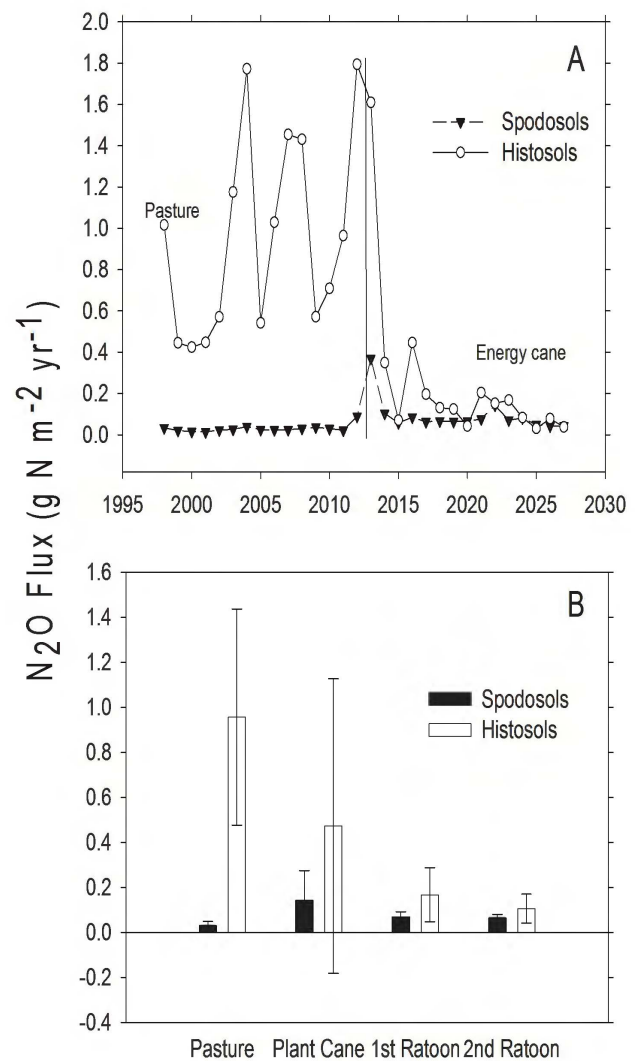


Figure 8. Modeled N_2O flux from pasture and land converted to energy cane in Highlands County, Florida. A) Total annual N_2O flux ($\text{g N}\cdot\text{m}^{-2}$). The solid vertical line represents year of land use conversion from pasture to energy cane, positive values indicate N_2O efflux and negative values indicate N_2O uptake. B) Mean N_2O flux ($\text{g N}\cdot\text{m}^{-2}\cdot\text{yr}^{-1}$, \pm SD) for 15 years in pasture, and for 5, 3-year ratoon cycles in energy cane (each bar represents the average of 5 values, one for each year for each stage in the planting cycle).

doi:10.1371/journal.pone.0072019.g008

larger pool of active C (weekly to monthly turnover) than Spodosols under both pasture and energy cane (pasture, $t = 19.25$, d.f. = 14, $P < 0.001$; energy cane, $t = 14.21$, d.f. = 14, $P < 0.001$). Comparing the remaining total SOC pools between the end of pasture and the last year of the energy cane simulation, Histosols lost a large amount of soil organic C; 5714 $\text{g C}\cdot\text{m}^{-2}$ to 1 m depth (Figure 6; $t = 296$, d.f. = 14, $P < 0.001$), compared to the SOC loss from Spodosols of 224 $\text{g C}\cdot\text{m}^{-2}$ to 1 m (Table 3).

Nitrogen mineralization increased after pasture was converted to energy cane on both the fertilized Spodosols ($t = 9.02$, d.f. = 14, $P < 0.001$) and the non-fertilized Histosols ($t = 2.72$, d.f. = 14, $P = 0.02$). After conversion to energy cane, Histosols had higher rates of N mineralization than Spodosols (Figure 7; $t = 3.43$, d.f. = 14, $P = 0.004$), and this increase in available N likely accounted for the continued high yields on Histosols.

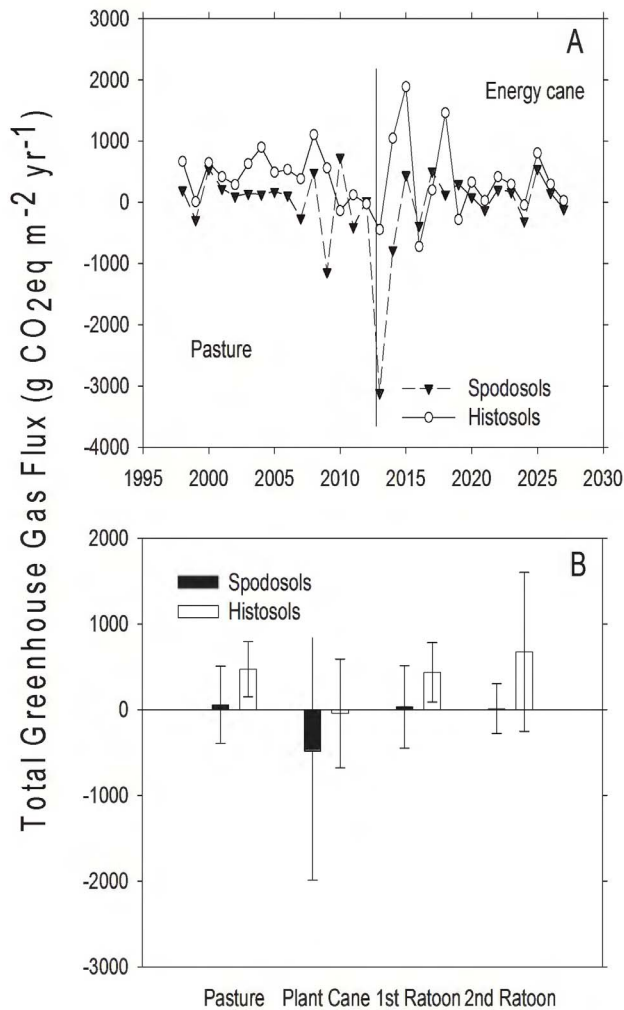


Figure 9. Changes in total greenhouse gas (GHG) from pasture and land converted to energy cane in Highlands County, Florida. Positive values indicate GHG efflux and negative values indicate GHG uptake. A) Total annual GHG flux, reported as CO₂ equivalents converted to account for differences in warming potential (g CO₂e·m⁻²). The solid vertical line represents year of land use conversion from pasture to energy cane. B) Mean greenhouse gas flux in CO₂ equivalents converted to account for differences in warming potential (g CO₂e·m⁻²·yr⁻¹, ± SD) for 15 years in pasture, and for 5, 3-year ratoon cycles in energy cane (each bar represents the average of 5 values, one for each year for each stage in the planting cycle). doi:10.1371/journal.pone.0072019.g009

Prior to conversion to energy cane, N₂O efflux was higher in pastures on Histosols compared to Spodosols (Figure 8; Wilcoxon rank sum, $W = 225$, $P < 0.001$). After conversion to energy cane, Histosols remained greater sources of N₂O than Spodosols ($t = 12.15$, d.f. = 14, $P < 0.001$). Conversion of pasture to energy cane decreased N₂O efflux on Histosols (Figure 8a; $t = 4.30$, d.f. = 14, $P < 0.001$), but increased N₂O efflux on Spodosols (Figure 8b; $t = 2.87$, d.f. = 14, $P = 0.01$). It is likely that N₂O emission from Histosols decreased following conversion because the increase in productivity resulted in a higher uptake of nitrate that would otherwise be available for denitrification.

Total GHG exchange (global warming potential) was calculated by converting the fluxes of CH₄ and N₂O to CO₂ equivalents based on their warming potential relative to CO₂ [87] and

summing these with total system C flux (Table 2). Variation in weather caused substantial inter-annual variation in total GHG flux, with both pasture and energy cane varying between net GHG sinks and sources (Figure 9); no significant differences in annual GHG flux were resolved on either soil type (Spodosols: $t = 1.15$, d.f. = 14, $P = 0.27$; Histosols: $t = 0.13$, d.f. = 14, $P = 0.90$). When the cumulative GHG emission were calculated for the fifteen years prior to conversion, pasture was a net source to GHGs to the atmosphere on both soil types, and pasture was a stronger source on Histosols (8304 gCO₂e·m⁻²) than on Spodosols (2035 gCO₂e·m⁻²; Table 3). Conversion of pasture to energy cane caused the Spodosols to transition from a source to a sink for GHGs and reduced the flux of GHGs to the atmosphere on Histosols. On both soil types, the reduction GHG emission to the atmosphere was associated with a large decrease in CH₄ emissions caused by the elimination of cattle grazing. On the Histosols, the reduction in N₂O emissions to the atmosphere also contributed to reduced emission of GHGs. This analysis of GHG emissions and their corresponding global warming potentials did not account for the displacement of fossil fuel emissions by the biofuel product.

Discussion

Parameterization of the DayCent model for energy cane, an emerging bioenergy crop, successfully simulated biomass production across the southeast United States (Figure 1). Our simulations suggested high yields for energy cane on former pastureland in a subtropical climate when Spodosols are highly fertilized (200 kg N·ha⁻¹·yr⁻¹), and when microbial activity in Histosols leads to high rates of N mineralization (rates were 44% higher on Histosols). When integrated over 15 years (Table 3), conversion of pasture to energy cane on Spodosols converted a net source of GHG (due to cattle CH₄ emissions) to a sink driven by the removal of cattle and the increase in C uptake by energy cane. While Histosols were a net GHG source under both pasture and energy cane, the source was reduced by the land use conversion (Table 3). The GHG improvement resulting from this conversion from pasture to energy cane would be even greater if fossil fuel displacement by cellulosic ethanol had been included.

The range of our simulated energy cane yields was 46–76 Mg ha⁻¹ dry mass per year on fertilized Spodosols and unfertilized Histosols. Using published values for the conversion efficiency for the production of cellulosic ethanol [22], a hypothetical energy cane farm of 10,000 ha could therefore produce between 142–236 million liters of ethanol [92]. In comparison, equal areas of land devoted to corn grain and Miscanthus in the Midwest would yield between 25 and 73% this amount of ethanol, respectively, assuming the maximum yields reported by other authors [11,22].

Typically, sugarcane yield declines with ratooning, the repeated harvests of aboveground material generated by vegetative growth [93]. The model reproduced the yield decline for energy cane on Spodosols but not on Histosols, but the model in its current configuration probably failed to capture the mechanisms that would normally cause a decline in yield. Various factors ranging from increases in nematode populations and ratoon stunting disease, to mechanical compaction of the soil have been implicated in ratoon decline [94,95], and these were not accounted for in the model. Although sugarcane in Florida typically is grown for three years and three annual harvests before re-planting, if it were grown for more years between re-planting, we would expect a continuing yield decline on the Spodosols. In contrast, continued mineralization of organic matter on Histosols may sustain high yields beyond the 3-year period simulated in the model. On both soils the GHG benefits would be improved with longer ratoon

cycles because of less soil disturbance due to decreased frequency of soil disturbance for replanting.

Organic matter (OM) content of soils is important for sustaining high yields of sugarcane, in part because OM mineralization provides the labile N necessary to sustain plant growth. Spodosols had much less OM than Histosols (Appendix I; Figure 6; [65,96]). The high CO₂ efflux rates from Histosols (Figures 3–4) and the patterns of SOC loss following land use change (Figure 6) correspond to higher rates of OM mineralization. The associated higher rates of N mineralization (Table 3; Figure 7) on Histosols provided additional N to energy cane and improved crop yield (Figure 2). Although energy cane on Spodosols was fertilized to offset the low N content of these soils, rates of nitrification (the process by which NH₄⁺ is converted into the highly mobile NO₃⁻ anion) were higher on these soils. The fertilizer applied to energy cane crops on Spodosols in the simulations was NH₄⁺ - NO₃⁻, a labile substrate for nitrification [66]. Spodosols had consistently higher nitrification rates than Histosols, and therefore higher NO₃⁻ content because of fertilization, and it is possible that some fraction of fertilizer was lost before plant uptake [97]. We hypothesize that a combination of NO₃⁻ leaching from fertilizer before plant uptake, lower initial N content, and lower mineralization rates may have created a stronger N limitation to yield on Spodosols but not on Histosols.

Before land use change, pasture on both soil types was a net source of GHGs to the atmosphere (Table 3). This is consistent with both direct measurements [98] and modeling efforts [99] that have found grazed pastures to be net sources of GHGs, but this is also a function of grass species present and animal stocking density [100]. The model estimated that pastures were sinks for CO₂, with total C uptake of 1159 g CO₂ m⁻² and 1367 g CO₂ m⁻² over 15 years on Spodosols and Histosols, respectively (Table 3). In the absence of cattle, both soil types were CH₄ sinks (112 and 135 g CO₂eq, respectively), but including reasonable estimates of CH₄ efflux from cattle (Figure 5) and N₂O efflux from soils (Figure 8) resulted in net GHG emission to the atmosphere on both pasture soils (Table 3). Following conversion to energy cane, the production of N₂O on Spodosols increased (Figure 8) within the range of N₂O flux rates previously reported for Australian sugarcane fertilized at similar rates to this study [37]. The increase in N₂O was offset by uptake of CO₂ and the change from a source to a sink for CH₄ (Figure 5), with the net effect that Spodosols became a net GHG sink (Table 3). Indeed, over 15 years energy cane on Spodosol was a GHG sink of >40 Mg CO₂eq per hectare (Table 3). On Histosols, eliminating grazing following the conversion of pasture to energy cane caused a similar decrease in CH₄ efflux to the atmosphere (Figure 5) and this land use change also reduced N₂O emissions (Figure 8; Table 3). However, following land conversion this system switched from a net CO₂ sink to a source, and this change in total system C prevented energy cane on Histosols from becoming a net sink for GHGs. The driver for GHG production on Histosols was higher R_H, and significant losses of soil organic matter [69] that resulted in total C efflux from these soils (Table 3).

References

1. IPCC (2007) Climate Change 2007: The Physical Science Basis. Contribution of Working Group I to the Fourth Assessment Report of the Intergovernmental Panel on Climate Change. Solomon S, Qin D, Manning M, Chen Z, Marquis M et al. Eds. Cambridge, UK, Cambridge, UK.
2. Le Quéré C, Raupach MR, Canadell JG, Marland G, Bopp L, et al. (2009) Trends in the sources and sinks of carbon dioxide. *Nat Geosci* 2: 831–836.
3. Pan Y, Birdsey RA, Fang J, Houghton R, Kauppi PE, et al. (2011) A large and persistent carbon sink in the world's forests. *Science* 333: 988–993.
4. Lal R (2004) Soil carbon sequestration impacts on global climate change and food security. *Science* 304: 1623–1627. doi: 10.1126/science.1097396.

The model successfully simulated energy cane biomass production across a range of sites across the southern United States (Figure 1). Previous studies have shown that DayCent reliably predicts soil biogeochemistry and GHG exchange when parameterized for net primary production [51], suggesting that the estimates of GHG flux and soil C dynamics were reasonable. Eddy-flux measurements of GHG exchange that are now being initiated at this site will provide an independent test of the predictions of GHG effects of conversion made here.

Indirect land use change (ILUC) – the stimulation of deforestation or increased agriculture in other parts of the world driven by diversion of current agricultural land to bioenergy production – potentially poses an environmental risk of bioenergy production [7,101]. Growing energy cane on land converted from low stocking density pasture would be unlikely to trigger significant increases in food price or ILUC in the way that large-scale shifts from corn or soy production in the Midwestern United States would motivate greater production of those crops elsewhere [13]. Indeed, the recommended stocking density for Bahiagrass pasture in this region is ~1 animal·ha⁻¹ [31], and cattle and calf operations in Florida account for less than 6% of the state's annual agricultural revenue [102]. The loss in meat production could be redressed with minimal increases in current stocking rates, and would be unlikely to trigger the type of large-scale landscape changes that may occur through the diversion of midwestern agricultural land [7]. However, displacing cattle for energy cane production may potentially increase methane emissions elsewhere, which would negate the local benefit of reduced methane flux to the atmosphere.

The environmental impacts of changing land use from pasture to energy cane were highly dependent on the soil type. Whereas the cultivation of Histosols results in high CO₂ efflux and the reduction of soil carbon (Figures 3, 4, and 6), the model predicted that energy cane crops on Spodosols would act as a net C and GHG sink (Figure 6, Table 3). From both a biofuel and biogeochemical perspective, these results suggest that energy cane grown on nutrient poor soils, as opposed to organic soils, has the potential to be a high-yielding bio-ethanol feedstock that creates a GHG sink in the Southeastern United States.

Acknowledgments

We thank Michael Masters for lab analysis of plant and soil C and N. Lykes Brothers Inc. graciously provided access to energy cane plantations and pastures, which greatly helped in parameterizing our model. We also thank Dr. Robert Gilbert, Dr. Barry Glaz, and Mr. Pedro Korndorfer for sharing their knowledge on sugar and energy cane agronomy and data that aided our modeling effort.

Author Contributions

Conceived and designed the experiments: BDD KJAT WJP EHD. Performed the experiments: BDD SCD CK WJP. Analyzed the data: BDD SCD KJAT WJP SPL EHD. Contributed reagents/materials/analysis tools: CK WJP. Wrote the paper: BDD KJAT WJP SPL EHD.

10. United States Congress (2007) The Energy Independence and Security Act of 2007 (H.R. 6). Available: http://frwebgate.access.gpo.gov/cgi-bin/getdoc.cgi?dbname=110_cong_bills&docid=f:h6enr.txt.pdf. Accessed 2010 Dec 19.
11. Heaton EA, Dohleman FG, Long SP (2008) Meeting US biofuel goals with less land: the potential of Miscanthus. *Glob Change Biol* 14: 2000–2014.
12. Fargione JE, Plevin RJ, Hill JD (2010) The ecological impact of biofuels. *Ann Rev Ecol Evol Syst* 41: 351–377.
13. Davis SC, Parton WJ, Del Grosso SJ, Keough C, Marx E, et al. (2012) Impacts of second-generation biofuel agriculture on greenhouse gas emissions in the corn-growing regions of the US. *Front Ecol Environ* 10: 69–74. doi:10.1890/110003.
14. Dien BS, Bothast RJ, Nichols NN, Cotta MA (2002) The U.S. corn ethanol industry: an overview of current technology and future prospects. *Int Sugar J* 103: 204–211.
15. Davis SC, Anderson-Teixeira KJ, DeLucia EH (2009) Life-cycle analysis and the ecology of biofuels. *Trends Plant Sci* 14: 140–146.
16. O'Hare M, Plevin RJ, Martin JI, Jones AD, Kendall A, et al. (2009) Proper accounting for time increases crop-based biofuels' greenhouse gas deficit versus petroleum. *Environ Res Lett* 4: doi:10.1088/1748-9326/4/2/024001.
17. Donner SD, Kucharik CJ (2008) Corn-based ethanol production compromises goal of reducing nitrogen export by the Mississippi River. *Proc Natl Acad Sci USA* 105: 4513–4518.
18. Hill J, Polasky S, Nelson E, Tilman D, Huo H (2009) Climate change and health costs of air emissions from biofuels and gasoline. *Proc Natl Acad Sci USA* 106: 2077–2082.
19. Smeets EMW, Bouwman LF, Stehfest E, van Vuuren DP, Posthuma A (2009) Contribution of N₂O to the greenhouse gas balance of first-generation biofuels. *Glob Change Biol* 15: 1–23.
20. Solomon BD, Barnes JR, Halvorsen KE (2007) Grain and cellulosic ethanol: history, economics, and energy policy. *Biomass Bioenergy* 31: 416–425.
21. Tilman D, Socolow R, Foley JA, Hill J, Larson E (2009) Beneficial biofuels—the food, energy and environment trilemma. *Science* 325: 270–271.
22. Somerville C, Youngs H, Taylor C, Davis SC, Long SP (2010) Feedstocks for lignocellulosic biofuels. *Science* 329: 790–792.
23. Tilman D, Hill J, Lehman C (2006) Carbon-negative biofuels from low-input high-diversity grassland biomass. *Science* 314: 1598–1600.
24. Anderson-Teixeira KJ, Davis SC, Masters MD, DeLucia EH (2009) Changes in soil organic carbon under biofuel crops. *Glob Change Biol Bioenergy* 1: 75–96.
25. Davis SC, Parton WJ, Dohleman FG, Smith CM, Del Grosso S, et al. (2010) Comparative biogeochemical cycles of bioenergy crops reveal nitrogen fixation and low greenhouse gas emissions in a *Miscanthus x giganteus* agro-ecosystem. *Ecosystems* 13: 144–156.
26. Robertson GP, Hamilton SK, Del Grosso SJ, Parton WP (2011) The biogeochemistry of bioenergy landscapes: carbon, nitrogen, and water considerations. *Ecol App* 21: 1055–1067. doi: 10.1890/09-0456.1.
27. Zeri M, Anderson-Teixeira KJ, Masters MD, Hickman G, DeLucia EH, et al. (2011) Carbon exchange by establishing biofuel crops in central Illinois. *Agric Ecosyst Environ* 144: 319–329.
28. Sladden SE, Bransby DI, Aiken GE, Prine GM (1991) Biomass yield and composition, and winter survival of tall grasses in Alabama. *Biomass Bioenergy* 1: 123–127.
29. Mark T, Darby P, Salasi M (2009) Energy cane usage for cellulosic ethanol: estimation of feedstock costs. Southern Agricultural Economics Association Annual Meeting, Atlanta, Georgia, January 31-February 3, 2009.
30. Baucum LE, Rice RW (2009) An overview of Florida sugarcane. University of Florida IFAS Extension document SS-AGR-232.
31. Hersom M (2005) Pasture stocking density and the relationship to animal performance. Animal Science Department, Florida Cooperative Extension Service, Institute of Food and Agricultural Sciences, University of Florida, Document number AN155.
32. Steiner J (2012) personal communication.
33. Bowden RD, Nadelhoffer KJ, Boone RD, Melillo JM, Garrison JB (1993) Contributions of aboveground litter, belowground litter, and root respiration to soil respiration in a temperate mixed hardwood forest. *Can J For Res* 23: 1402–1407.
34. Paustian K, Six J, Elliott ET, Hunt HW (2000) Management options for reducing CO₂ emissions from agricultural soils. *Biogeochemistry* 48: 147–163.
35. DeRamus HA, Clement TC, Giampola DD, Dickison PC (2003) Methane emissions of beef cattle on forages: efficiency of grazing management systems. *J Environ Qual* 32: 269–277.
36. Mosier A, Kroeze C, Nevison C, Oenema O, Seitzinger S, et al. (1998) Closing the global N₂O budget: nitrous oxide emissions through the agricultural nitrogen cycle. *Nutr Cycl Agroecosys* 52: 225–248.
37. Thorburn PJ, Biggs JS, Collins K, Probert ME (2010) Nitrous oxide emissions from Australian sugarcane production systems – are they greater than from other cropping systems? *Agric Ecosyst Environ* 136: 343–350.
38. Rice RW, Gilbert RA, Lentini RS (2002) Nutritional requirements for Florida sugarcane. Florida Cooperative Extension Service, UF/IFAS, Document SS-ARG-228. University of Florida Institute of Food Agricultural Science.
39. Morgan KT, McCray JM, Rice RW, Gilbert RA, Baucum LE (2009) Review of current sugarcane fertilizer recommendations: a report from the UF/IFAS sugarcane fertilizer standards task force. Document SL 295, Soil and Water Science Department, Florida Cooperative Extension Service, Institute of Food and Agricultural Sciences, University of Florida.
40. Morris DR, Gilbert RA, Reicosky DC, Gesch RW (2004) Oxidation potentials of soil organic matter in Histosols under different tillage methods. *Soil Sci Soc Am J* 68: 817–826.
41. Stehfest E, Bouwman LF (2006) N₂O and NO emission from agricultural fields and soils under natural vegetation: summarizing available measurement data and modeling of global annual emissions. *Nutr Cycl Agroecosys* 74: 207–228.
42. Anderson-Teixeira KJ, Masters MD, Black CK, Zeri M, Hussain MZ, et al. (2012) Altered belowground carbon cycling following land use change to perennial bioenergy crops. *Ecosystems*, in press.
43. Smith CM, David MB, Mitchell CA, Masters MD, Anderson-Teixeira KJ, et al. (2013) Reduced nitrogen losses following conversion of row crop agriculture to perennial biofuel crops. *J Environ Qual* 42: 219–228, doi: 10.2134/jeq2012.0210.
44. Beale CV, Long SP (1997) Seasonal dynamics of nutrient accumulation and partitioning in the perennial C-4-grasses *Miscanthus x giganteus* and *Spartina cynosuroides*. *Biomass Bioenergy* 12: 419–428.
45. Hansen EM, Christensen BT, Jensen LS, Kristensen K (2004) Carbon sequestration in soil beneath long-term *Miscanthus* plantations as determined by ¹³C abundance. *Biomass Bioenergy* 26: 97–105.
46. NRCS Web Soil Survey website. Available: <http://websoilsurvey.nrcs.usda.gov/app/HomePage.htm>. Accessed 2010 Oct 7.
47. Parton WJ, Hartman MD, Ojima DS, Schimel DS (1998) DAYCENT and its land surface submodel: description and testing. *Glob Planet Change* 19: 35–48.
48. Parton WJ, Holland EA, Del Grosso SJ, Hartmann MD, Martin RE, et al. (2001) Generalized model for NO_x and N₂O emissions from soils. *J Geophys Res-Atmos* 106: 17403–17420.
49. DayCent: Daily Century Model website. Available: <http://www.nrel.colostate.edu/projects/daycent/>. Accessed 2010 Jun 4.
50. Del Grosso SJ, Halvorson AD, Parton WJ (2008a) Testing DayCent model simulations of corn yields and nitrous oxide emissions in irrigated tillage systems in Colorado. *J Environ Qual* 37: 1383–1389, doi:10.2134/jeq2007.0292.
51. Parton WJ, Hanson PJ, Swanston C, Torn M, Trumbore SE, et al. (2010) ForCent model development and testing using the Enriched Background Isotope Study experiment. *J Geophys Res* 115: G04001.
52. Parton WJ, Schimel DS, Cole CV, Ojima DS (1987) Analysis of factors controlling soil organic levels of grasslands in the Great Plains. *Soil Sci Soc Am J* 51: 1173–1179.
53. Parton WJ, Ojima DS, Cole CV, Schimel DS (1994) A general model for soil organic matter dynamics: sensitivity to litter chemistry, texture and management, R.B. Bryant, R.W. Arnold, Editors, Quantitative Modeling of Soil Forming Processes, Soil Science Society of America, Madison, WI. Pp. 147–167.
54. Eitzinger J, Parton WJ, Hartman M (2000) Improvement and validation of a daily soil temperature submodel for freezing/thawing periods. *Soil Sci* 165: 525–534.
55. David MB, Del Grosso SJ, Hu X, McIsaac GF, Parton WJ, et al. (2009) Modeling denitrification in a tile-drained, corn and soybean agroecosystem of Illinois, USA. *Biogeochemistry* 93: 7–30.
56. Del Grosso SJ, Parton WJ, Mosier AR, Ojima DS, Hartmann MD (2000a) Interaction of soil carbon sequestration and N₂O flux with different land use practices. In: van Ham J, Baede APM, Meyer LA, Ybema R (eds.), Non-CO₂ Greenhouse Gases: Scientific Understanding, Control and Implementation. Kluwer Academic Publishers, The Netherlands. 303–311.
57. Del Grosso SJ, Parton WJ, Mosier AR, Ojima DS, Kulmala AE, et al. (2000b) General model for N₂O and N₂ gas emissions from soils due to denitrification. *Global Biogeochem Cycles* 14: 1045–1060.
58. Del Grosso SJ, Mosier AR, Parton WJ, Ojima DS (2005) DayCent model analysis of past and contemporary soil N₂O and net greenhouse gas flux for major crops in the USA. *Soil Tillage Res* 83: 9–24.
59. Del Grosso SJ, Ojima DS, Parton WJ, Mosier AR, Peterson GA, et al. (2002) Simulated effects of dryland cropping intensification on soil organic matter and GHG exchanges using the DAYCENT ecosystem model. *Environ Pollution* 116, S75–S83.
60. Del Grosso SJ, Parton WJ, Ojima DS, Keough CA, Riley TH, et al. (2008b) DAYCENT simulated effects of land use and climate on county level N loss vectors in the USA. Pages 571–595 in: R.F. Follett, and J.L. Hatfield (eds.) Nitrogen in the Environment: Sources, Problems, and Management, 2nd ed. Elsevier Science Publishers, The Netherlands.
61. Galdos MV, Cerri CC, Cerri CEP, Paustian K, Van Antwerpen R (2010) Simulation of sugarcane residue decomposition and aboveground growth. *Plant Soil* 326: 243–259. DOI 10.1007/s11104-009-004-3.
62. Hartmann MD, Merchant EK, Parton WJ, Gutmann MP, Lutz SM, et al. (2011) Impact of historical land use changes in the U.S. Great Plains, 1883 to 2003. *Ecol App* 21: 1105–1119.
63. Adler PR, Del Grosso SJ, Parton WJ (2007) Life-Cycle assessment of net greenhouse-gas flux for bioenergy cropping systems. *Ecol Appl* 17: 675–691.
64. Galdos MV, Cerri CC, Cerri CEP, Paustian K, Van Antwerpen R (2009) Simulation of soil carbon dynamics under sugarcane with the CENTURY Model. *Soil Sci Soc Am J* 73: 802–811.

65. Vallis I, Parton WJ, Keating BA, Wood AW (1996) Simulation of the effects of trash and N fertilizer management on soil organic matter levels and yields of sugarcane. *Soil Tillage Res* 38: 115–132.
66. Pepper DA, Del Grosso SJ, McMurtrie RE, Parton WJ (2005) Simulated carbon sink response of shortgrass steppe, tallgrass prairie and forest ecosystems to rising [CO₂], temperature and nitrogen input, *Global Biogeochem Cycles* 19: GB1004 doi:10.1029/2004GB002226.
67. Kelly RH, Parton WJ, Hartman MD, Stretch LK, Ojima DS, et al. (2000), Intra-annual and interannual variability of ecosystem processes in shortgrass steppe, *J Geophys Res* 105(D15) 20093–20100 doi:10.1029/2000JD900259.
68. Brady NC, Weil RR (2002) *The nature and properties of soils*. Prentice Hall, Upper Saddle River, New Jersey. 960 p.
69. Morris DR, Gilbert RA (2005) Inventory, crop use, and soil subsidence of Histosols in Florida. *J Food Agr Environ* 3: 190–193.
70. Newman Y, Vendramini J, Blount A (2010) Bahiagrass (*Paspalum notatum*): overview and management. University of Florida IFAS Extension. Publication #SS-AGR-332. <http://edis.ifas.ufl.edu/ag342>. Accessed 2011 Aug 7.
71. Valentine DW, Holland EA, Schimel DS (1994) Ecosystem and physiological controls over methane production in northern wetlands. *J Geophys Res* 99: 1563–1571.
72. Del Grosso SJ, Parton WJ, Mosier AR, Walsh MK, Ojima DS, et al. (2006) DayCent national scale simulations of N₂O emissions from cropped soils in the USA. *J Environ Qual* 35: 1451–1460.
73. US Department of Agriculture, National Agricultural Statistics Service website. Available: http://www.nass.usda.gov/Quick_Stats/. Accessed 2010 Feb 25.
74. DAYMET United States Data Center-A source for daily surface weather data and climatological summaries website. Available: www.daymet.org. Accessed 2010 Jun 1.
75. US Department of Agriculture Natural Resources Conservation Service, Web Soil Survey website. Available: <http://websoilsurvey.sc.egov.usda.gov/app/HomePage.htm>. Accessed 2010 Dec 12.
76. R Development Core Team (2007) *R: A language and environment for statistical computing*. R Foundation for Statistical Computing, Vienna, Austria.
77. Barbour MG, Billings WD (1988) *North American terrestrial vegetation*. Press Syndicate of the University of Cambridge. Melbourne, Australia.
78. Pitman WD, Portier KM, Chambliss CG, Kretschmer AE (1992) Performance of yearling steers grazing bahia grass pastures with summer annual legumes or nitrogen fertilizer in subtropical Florida. *Trop Grasslands* 26: 206–211.
79. Glaz B, Ulloa MF (1993) Sugarcane yields from plant and ratoon sources of seed cane. *J Am Soc Sugar Cane Tech* 13: 7–13.
80. Wiedenfeld RP, Encisco J (2008) Sugarcane responses to irrigation and nitrogen in semiarid south Texas. *Agron J* 100: 665–671.
81. Gilbert RA, Shine JM, Miller JD, Rice RW, Rainbolt CR (2006) The effect of genotype, environment and time of harvest on sugarcane yields in Florida, USA. *Field Crop Res* 95: 156–170.
82. Glaz B (2012) Personal communication.
83. Glaz B, Morris DR (2010) Sugarcane Responses to water-table depth and periodic flood. *Agron J* 102: 372–380.
84. US Environmental Protection Agency (2011) Florida Sugarcane Metadata. Environmental Protection Agency, Washington DC. Available: http://www.epa.gov/oppefed1/models/water/met_fl_sugarcane.htm. Accessed 2011 August 1.
85. Muchovej RM, Newman PR (2004) Nitrogen fertilization of sugarcane on a sandy soil: II soil and groundwater analysis. *J Am Soc Sugar Cane Tech* 24: 225–240.
86. University of Illinois, DeLucia Laboratory Public Data Archive website. Available: <http://www.life.illinois.edu/delucia/Public%20Data%20Archive/>. Accessed 2013 Jun 4.
87. Department of Energy and Climate Change (DECC) and the Department for Environment, Food and Rural Affairs website. Available: <https://www.gov.uk/government/publications/2012-guidelines-to-defra-decc-s-ghg-conversion-factors-for-company-reporting-methodology-paper-for-emission-factors>. Accessed: 2013 Jul 23.
88. Forster P, Ramaswamy V, Artaxo P, Bernsten T, Betts R, et al. (2007) *Climate Change 2007: The Physical Science Basis. Contribution of Working Group I to the Fourth Assessment Report of the Intergovernmental Panel on Climate Change*. Cambridge University Press, Cambridge, United Kingdom and New York, NY, USA.
89. Chapin FS, Woodwell G, Randerson J, Rastetter E, Lovett G, et al. (2006) Reconciling carbon-cycle concepts, terminology, and methods. *Ecosystems* 9: 1041–1050.
90. Crawley MJ (2007) *The R Book*. John Wiley and Sons, West Sussex, England. 942 p.
91. Storey JD (2003) The positive false discovery rate: a Bayesian interpretation and the q-value. *Ann Stat* 31: 2013–2035.
92. Graham-Rowe D (2011) Agriculture: beyond food versus fuel. *Nature* 474: S6–S8. doi: 10.1038/474S06a.
93. Ball-Coelho B, Sampaio EVSB, Tiessen H, Stewart JWB (1992) Root dynamics in plant and ratoon crops of sugar cane. *Plant Soil* 142: 297–305.
94. Hoy JW, Grisham MP, Damann KE (1999) Spread and increase of ratoon stunting disease of sugarcane and comparison of disease detection methods. *Plant Disease* 83: 1170–1175.
95. Stirling GR, Blair BL, Pattermore JA, Garside AL, Bell MJ (2001) Changes in nematode populations on sugarcane following fallow, fumigation and crop rotation, and implications for the role of nematodes in yield decline. *Australas Plant Pathol* 30: 323–335.
96. Yadav RL, Prasad SR (1992) Conserving the organic matter content of the soil to sustain sugarcane yield. *Exp Ag* 28: 57–62.
97. Chapin FS, Matson PA, Mooney HA (2002) *Principals of Terrestrial Ecosystem Ecology*. Springer Science, New York, New York, USA.
98. Rowlings D, Grace P, Kiese R, Scheer C (2010) Quantifying N₂O and CO₂ emissions from a subtropical pasture. 19th World Congress of Soil Science, Soil Solutions for a changing World. 1–6 August 2010, Brisbane, Australia.
99. Howden SM, White DH, Mckean GM, Scanlan JC, Carter JO (1994) Methods for exploring management options to reduce greenhouse gas emissions from tropical grazing systems. *Clim Change* 27: 49–70.
100. Liebig MA, Gross JR, Kronberg SL, Phillips RL (2010) Grazing management contributions to net global warming potential: A long-term evaluation in the Northern Great Plains. *J Environ Qual* 39: 799–809.
101. Plevin RJ, O'Hare M, Jones AD, Tom MS, Gibbs HK (2010) Greenhouse gas emissions from biofuels: Indirect land use change are uncertain but may be much greater than previously estimated. *Env Sci Tech* 44: 8015–8021.
102. Florida Department of Agriculture and Consumer Services website. Available: <http://www.fl-ag.com/agfacts.htm>. Accessed 2011 Oct 1.