

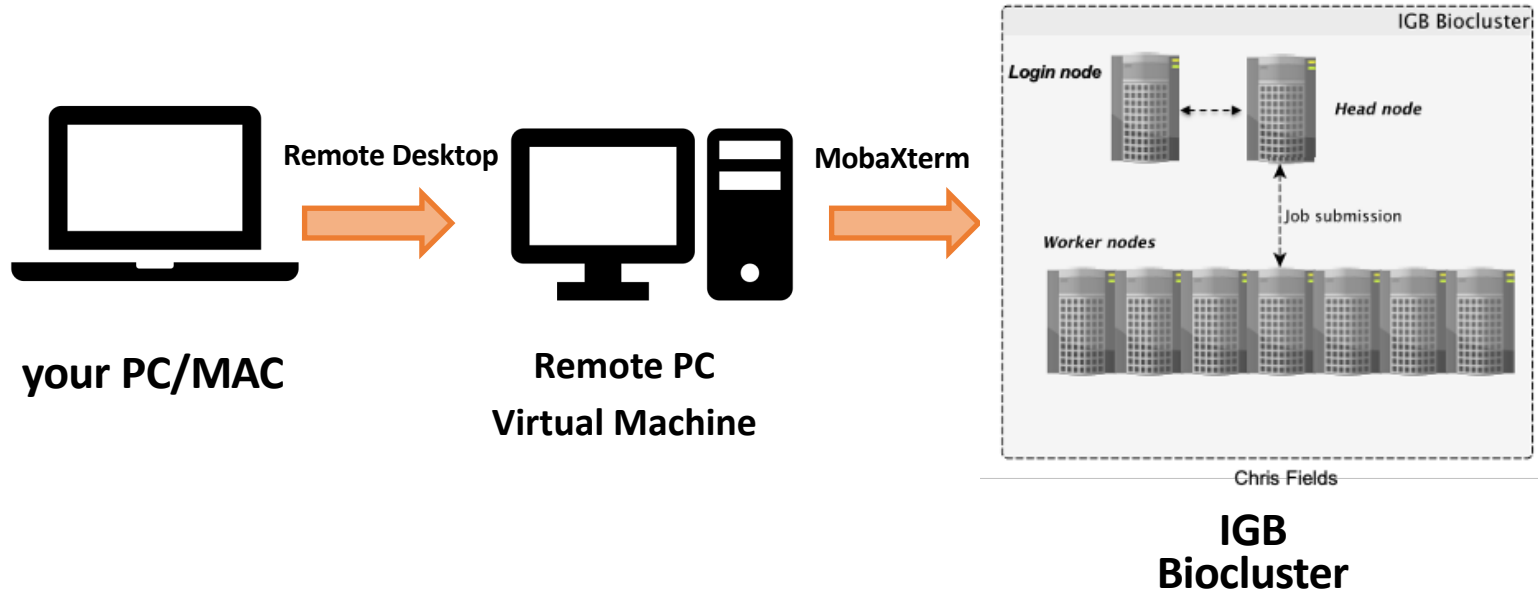
VM Setup

Shayan Tabe Bordbar

Saba Ghaffari

Edited by: Negin Valizadegan

Outline of VM Steps (for UIUC users)



- You need to connect to the campus VPN to be able to connect to the remote desktop. Use the following link to download and setup the VPN client:
- <https://techservices.illinois.edu/services/virtual-private-networking-vpn/download-and-set-up-the-vpn-client>

UIUC Instructions For Mac Users

Step 0. Download Campus VPN (for UIUC users)

- Need to connect to campus VPN to connect to the remote desktop.
- Download the VPN client:
<https://techservices.illinois.edu/services/virtual-private-networking-vpn/download-and-set-up-the-vpn-client>

Windows 7, 8, 10, 11

How to install: [VPN, CISCO AnyConnect, Installation Instructions for Windows 7, 8, 10, 11](#)

Mac OS

How to install: [VPN, CISCO AnyConnect, Installing Cisco AnyConnect VPN for Mac OS](#)

Android, Kindle, Chromebook

How to install: [VPN, CISCO AnyConnect, Installing the Cisco AnyConnect VPN on Android, Kindle, Chromebook](#)

iPhone, iPad, and iPod Touch

How to install: [VPN, CISCO AnyConnect, Installing for iPhone, iPad, and iPod Touch](#)

Linux

How to install: [VPN, CISCO AnyConnect, Linux](#)

Other

Please note that Technology Services cannot guarantee VPN compatibility with these machines

How to install [VPN, CISCO AnyConnect, VPN Clients for Other Systems](#)

Step 1. Connect to Campus VPN (for UIUC users)

- After downloading and installing the VPN, Open the AnyConnect VPN and click on Connect
- Enter your UIUC Netid and password and click ok.
- You should now be connected to the VPN and can open Remote Desktop.



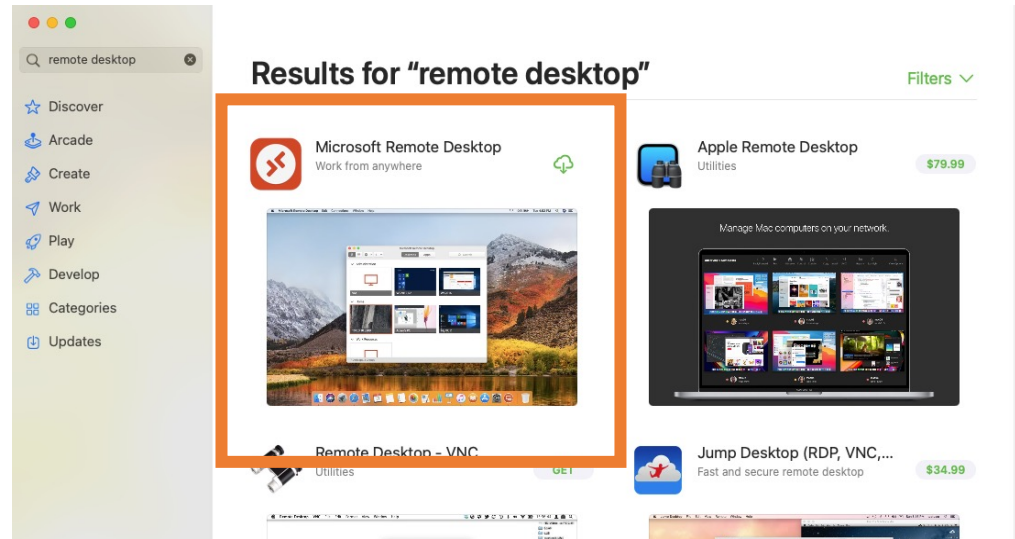
Step 2. Download Remote Desktop (for UIUC users)

*For Mac users:

Prerequisites:

- You need to have **Remote Desktop** installed on your computer.

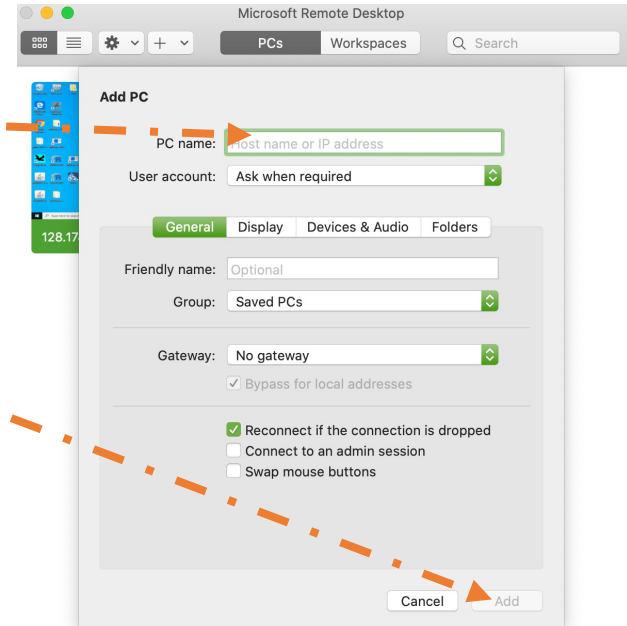
- Download & install **“Microsoft Remote Desktop”** from the App Store or here:
<https://apps.apple.com/us/app/microsoft-remote-desktop-10/id1295203466?mt=12>



Step 3. Prepare to log on to VM (for UIUC users)

*For Mac users:

- Open Microsoft Remote Desktop
- Click on **+** sign and then Add PC
- Enter the provided IP address in **PC name** field
- Click Add

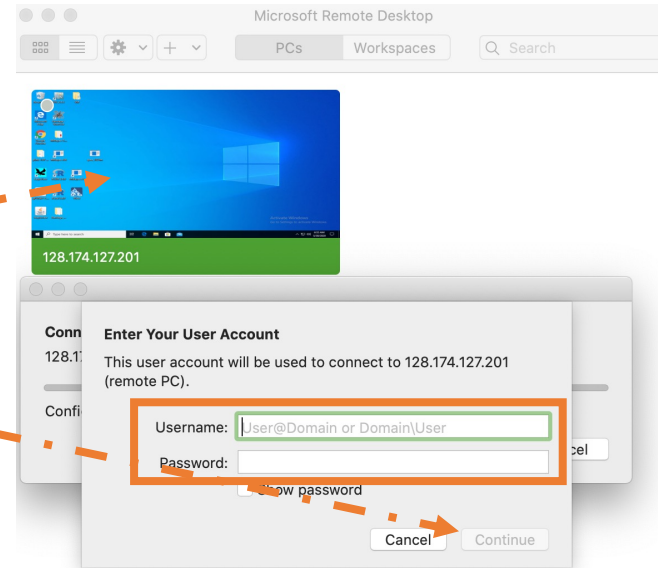


Now that you have successfully added the remote desktop let's connect to it .

Step 4. Log on to VM

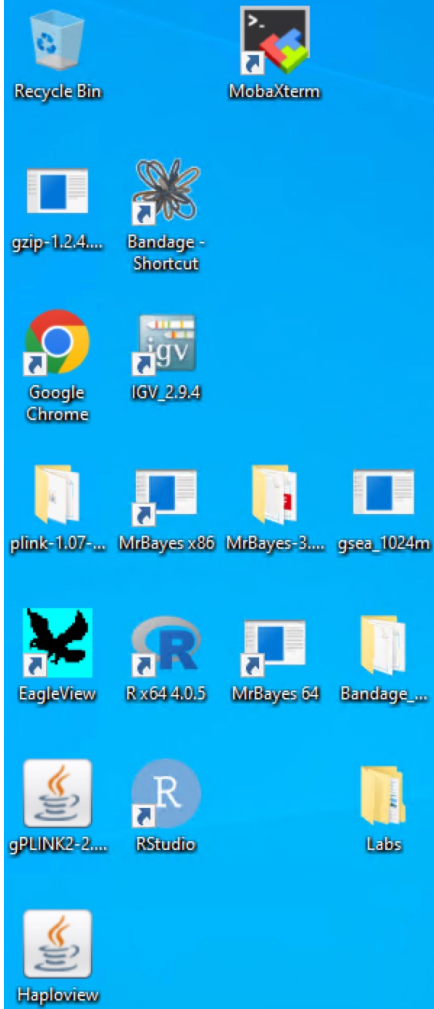
*For Mac users:

- Make sure you are connected to campus VPN
- Double click on the created PC
- Enter provided Username and Password then click **Continue**



Note that you need to set up the VM only once. After that you can just log in to the added VM.

Use the login instructions for all the labs requiring the VM.



A new screen will be opened that looks like this (PC/Windows OS)



UIUC Instructions For Windows/PC Users

Step 1. Connect to Campus VPN (for UIUC users)

- After downloading and installing the VPN, Open the AnyConnect VPN and click on Connect



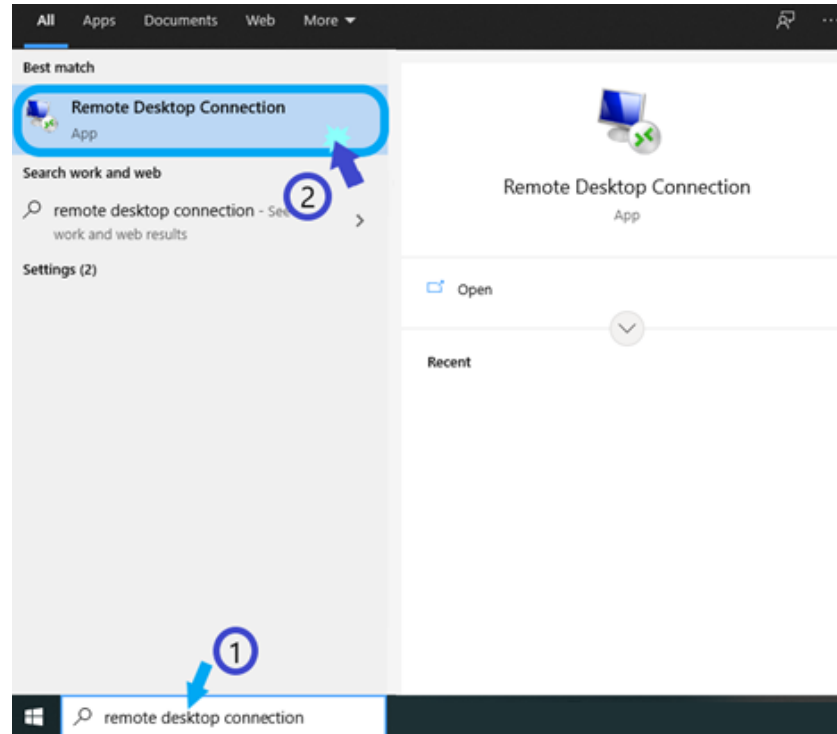
- Enter your Netid and password and click ok.

- You should now be connected to the VPN and can open Remote Desktop.

Step 2. Prepare to use Remote Desktop

***For PC:**

1. Search “Remote desktop connection” in the search bar
2. Click to open remote desktop

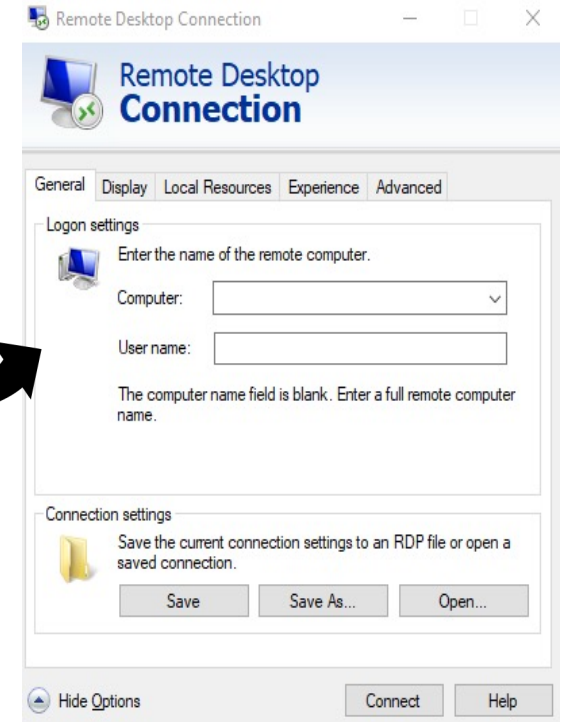
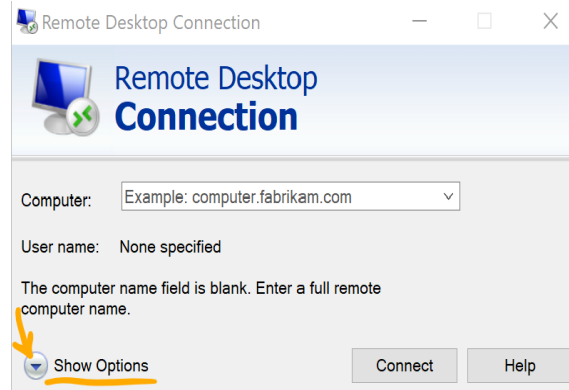
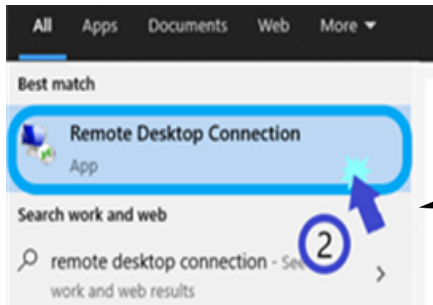


Step 3. Start Remote Desktop (for UIUC users)

***For PC:**

- When you click on "Remote Desktop Connection", it will open in a separate window

- Click "Show Options" to expand the window

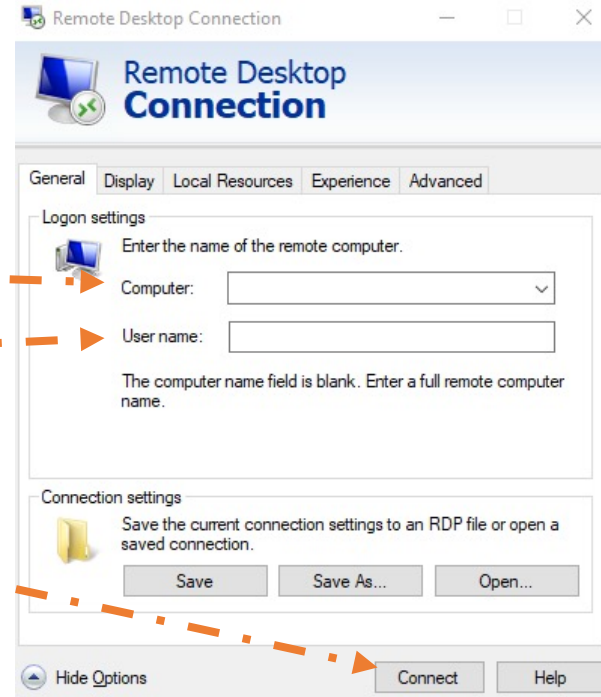


Step 4. Prepare to log on to VM (for UIUC users)

***For PC users:**

- Enter the provided IP address in **Computer** field
- Enter the provided username in **Username** field
- Click **Connect**

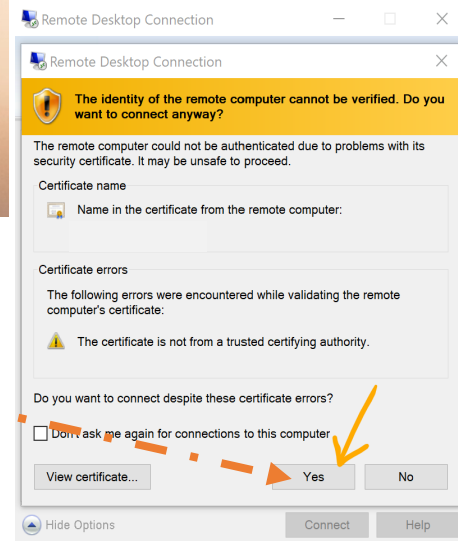
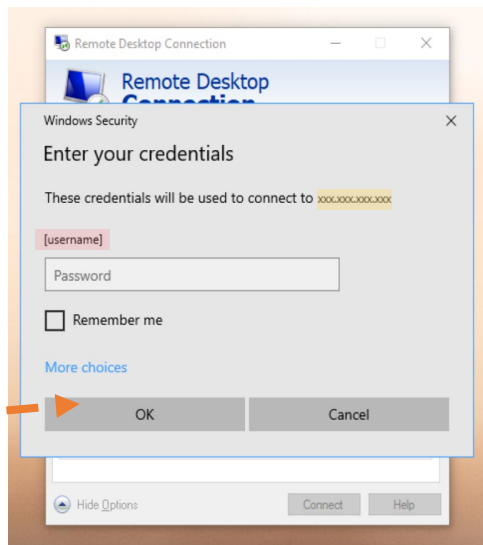
Now that you have successfully added the remote desktop let's connect to it .



Step 5. Log on to VM

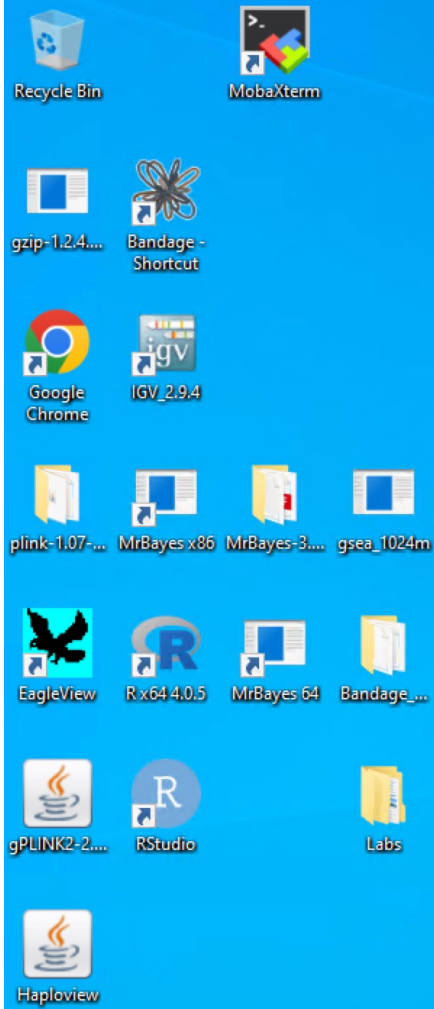
***For PC users:**

- Make sure you are connected to campus VPN
- The **username** and **IP address** you entered on the previous screen will be shown here
- Enter Password then click **OK**
- If shown the window asking if you **"Want to connect anyway?"** Press yes



Note that you need to set up the VM only once. After that you can just log in to the added VM.

Use the login instructions for all the labs requiring the VM.



A new screen will be opened that looks like this (PC/Windows OS)

