



ICONS

Nutrition and Cognition in Children

Can you help us learn how nutrition supports eye health and school performance?

RESEARCH STUDY

What is the goal of this study?

The goal of this study is to help us understand how nutrition supports eye health and school performance.

Who can join?

This study is for 8 to 10 year olds.

What will happen in the study?

Over nine months, your child will:

- Get measurements of their weight, height, and eye health
- Answer reading and math related questions
- Complete memory and learning computer tasks
- Eat a daily gummy
- Participate in seven two-hour visits

You will complete questionnaires about your child's health, behavior, and diet

Families will receive:

- Up to \$300 for your time
- Additional \$70 for travel costs (\$10 per visit)
- Parking provided

Principal Investigator: Naiman Khan, PhD, RD IRB #21066

LOCATION

Neurocognitive Health Behavior
(NHB) Laboratory

Louise Freer Hall, University of
Illinois Urbana-Champaign,

**906 South Goodwin Avenue,
Urbana, IL 61801**

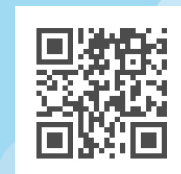
CONTACT

For more information, contact the
study coordinator at:

217-300-1667

or

iCONStudy@illinois.edu



**College of Applied
Health Sciences**

UNIVERSITY OF ILLINOIS URBANA-CHAMPAIGN



**Neurocognitive Health
Behavior Laboratory**