

# Jean Nouvel

PRINCIPAL ARCHITECT: Nouvel, Jean  
LOCATION: Paris  
FIRM OPENED: 1994  
EMPLOYEES: 140+



## FIRM PHILOSOPHY

Ateliers approach a project with a unique goal: transform landscapes and their surroundings. Ateliers Jean Nouvel focus on understanding the mind and how it will perceive their work and attempt to blend the built environment and their modern take on architecture.

## HISTORY

Ateliers Jean Nouvel is the product of Nouvel's 42 years in the profession. After attending École Des Beaux Arts, shadowing architect, François Seigneur and leading modernist movement Mars 76, Nouvel began his own practice. AJN is now one of the largest and most accomplished firms in France. Firm employees range from landscape architects to urban planners.

- The Aga Khan Prize for the Arab World Institute
- The Royal Gold Medal of the Royal Institute of British Architects
- The Gold Medal of the French Academy of Architecture
- \*\*\* Jean Nouvel 2008 laureate of the, Pritzker Architecture Prize

## PROJECT TYPE

- Museums
- Conference Halls
- Convention Centers
- Theaters
- Collective Housing
- Office Buildings
- Commercial Centers
- Private Residences

## COMPLETED PROJECTS

- 1971 – Plateau Beaubourg – Paris, France – Cultural
- 1989 – L'Institut du Monde Arabe – Paris, France – Cultural/ Exhibition
- 1998 – Dentsu Towers – Tokyo, Japan – Office/High Rise
- 2002 – Symphony Hall – Copenhagen, Denmark – Performance Space
- 2003 – Hotel Puerta America– Madrid, Spain - Hotel
- 2004 – Port – Le Havre, France – Transportation
- 2006 – Ferrari Factory – Modena, Italy – Industrial/ Factory

## REFERENCES

"A/E Firms Profiles." *A/E Firms Profiles*. N.p., 31 Aug. 2011. Web. 03 Nov. 2012.

<<http://aefirms.wordpress.com/2011/08/31/ateliers-jean-nouvel/>>.

"Jean Nouvel, Interview with the French Architect." *Jean Nouvel, Interview with the French Architect*. N.p., n.d.

Web. 03 Nov. 2012. <<http://www.designboom.com/eng/interview/nouvel.html>>.

Raymond Majewski (671836944)  
Caroline Smrokowski (655636040)

ARCH 101 ITA FALL 2012

# L'Institut du Monde Arabe

LOCATION: Paris, France

COMPLETION : 1987

BUILDING TYPE: Cultural Center/Exhibition



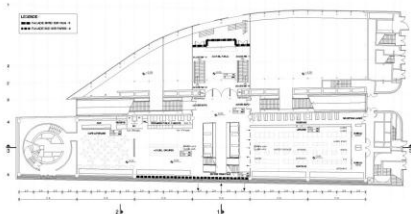
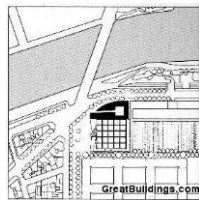
## BUILDING TYPE + PROGRAM

This cultural center acts as a bridge between the French and Arab cultures. It introduces these cultures through exhibits and performances. The building also has offices, a library, a rooftop restaurant and terrace, where one can see nearby sites such as Notre Dame. The main goal of the building is to promote Arab culture.

## BUILDING DESIGN INTENTIONS

The curving north façade of the Institut du Monde Arabe mimics the natural path of the Seine River on which it sits. This north façade appears transparent, as it is built out of sheets of glass. The building's southern façade is made up of square glass panels lined with metal decorations. These metal ornaments symbolize Arabian mosques in addition to filtering sunlight and acting as "brises-soleil."

## BUILDING PLANS, SECTIONS, ADDITIONAL IMAGES



## REFERENCES

Boissière, Olivier, and Jean Nouvel. "Institut Du Monde Arabe." *Jean Nouvel*. Paris: Terrail, 1996. 52-59.

Print.

"L'Institut Du Monde Arabe - Jean Nouvel - Great Buildings Architecture." *GreatBuildings*. N.p., n.d. Web. 02 Nov. 2012. <[http://www.greatbuildings.com/buildings/L\\_Institut\\_du\\_Monde\\_Arabe.html](http://www.greatbuildings.com/buildings/L_Institut_du_Monde_Arabe.html)>.

Winstanley, Tim. "AD Classics: Institut Du Monde Arabe / Jean Nouvel." *ArchDaily*. N.p., 02 Oct. 2011. Web. 02 Nov. 2012. <<http://www.archdaily.com/162101/ad-classics-institut-du-monde-arabe-jean-nouvel/>>.

Puliti, Laura. "Jean Nouvel, L'Institut Du Monde Arabe in Paris." *Floor Nature*. N.p., 26 Apr. 2007. Web. 9 Nov. 2012. <<http://www.floornature.com/projects-commerce/project-jean-nouvel-l-institut-du-monde-arabe-in-paris-4865/>>.