

# GEHRY PARTNERS, LLP

PRINCIPAL ARCHITECT: FRANK GEHRY  
LOCATION: LOS ANGELES, CA  
FIRM OPENED: 2001  
EMPLOYEES: 120



## FIRM PHILOSOPHY

Gehry Partners, LLP is a full-service firm with broad international experience in museum, theater, performance, academic, and commercial projects. All of the firm's resources and the extensive experience of its senior partners are available to assist in the design effort and to carry it forward through technical development and construction administration. At the heart of the firm's design approach is a method in which the client is brought fully into the design process as a member of the design team, making the design a true collaboration between architect and client. The staff of Gehry Partners includes a large number of senior architects with extensive experience in the technical development of building systems and construction documents and who are highly qualified in the management of complex construction projects. This development and management is aided by Digital Project, a sophisticated 3-dimensional computer modeling program, developed by Gehry Technologies, Inc.

## HISTORY

Frank Gehry established his practice in Los Angeles, California in 1962. Over the years, Gehry has moved away from a conventional commercial practice to a artistically directed atelier. Gehry's deconstructed architectural style began to emerge in the late 1970s when Gehry, directed by a personal vision of architecture, created collage-like compositions out of found materials. In 2001, Gehry Partner, LLP is formed and currently supports a staff of over 120 people. His buildings, including his private residence, have become tourist attractions. His works are cited as being among the most important works of contemporary architecture in the 2010 World Architecture Survey, which led Vanity Fair to label him as "the most important architect of our age". Gehry was the recipient of the Pritzker Architecture Prize of 1990, as well as the recipient of the American Institute of Architects Gold Medal, 1999.

## PROJECT TYPE

Architecture, Urban Design, and Interior Design.

The firm's expertise lies in Educational Architecture, such as museum and theater.

## COMPLETED PROJECTS

Guggenheim Museum Bilbao, at Bilbao, Spain, 1997.

Walt Disney Concert Hall, at Los Angeles, CA, 1989 to 2004.

Millennium Park Music Pavilion and Great Lawn in Chicago, IL, 2004.

## REFERENCES

"Gehry Partners, LLP." GUGGENHEIM. The Solomon R. Guggenheim Foundation. Web.

<<http://www.guggenheim.org/abu-dhabi/about/2074> >.

"Frank Gehry." ARCHITECTUREWEEK. Artifice, Inc. Web.

<[http://www.GreatBuildings.com/architects/Frank\\_Gehry.html](http://www.GreatBuildings.com/architects/Frank_Gehry.html)>.

Smith, Laura Massino. *Tour of Frank Gehry Architecture & Other L.A. Buildings*. Atglen, PA: Schiffer Pub., 2007. Print.

# Guggenheim Museum Bilbao

LOCATION: BILBAO, SPAIN

COMPLETION : 1997

BUILDING TYPE: EDUCATIONAL



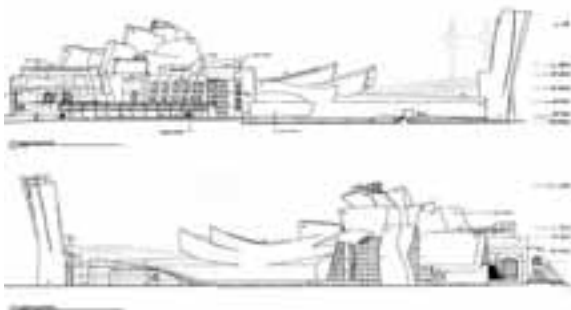
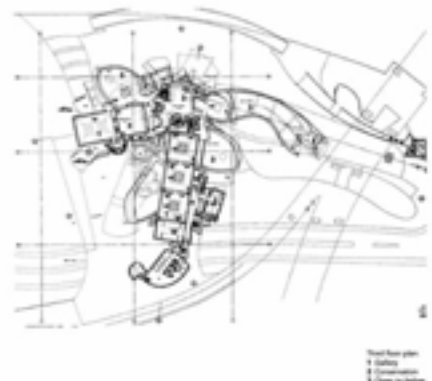
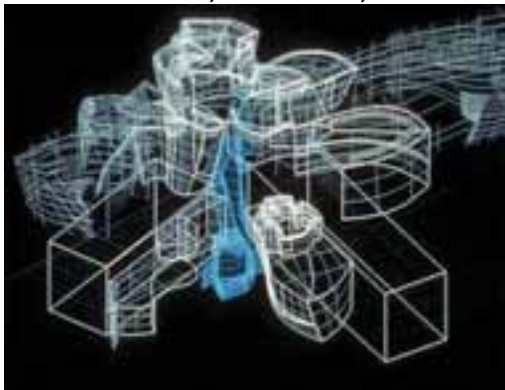
## BUILDING TYPE + PROGRAM

The building is a museum of modern and contemporary art. The museum is seamlessly integrated into the urban context, unfolding its interconnecting shapes of stone, glass and titanium on a 32,500-square-meter site along the Nervión River in the old industrial heart of the city.

## BUILDING DESIGN INTENTIONS

Designed by American architect Frank Gehry, the Guggenheim Museum Bilbao building represents a magnificent example of the most groundbreaking 20th-century architecture. The Museum represents an architectural landmark of audacious configuration and innovating design, providing a seductive backdrop for the art exhibited in it. It also represents recovery of the banks of the river for the city, redeveloping them for culture and leisure.

## BUILDING PLANS, SECTIONS, ADDITIONAL IMAGES



## REFERENCES

" Architecture in the Givenness - Toward the Difficult Whole Again: Part 1 " Steven Song. Archinect. Web. < <http://archinect.com/features/article/2216621/architecture-in-the-givenness-toward-the-difficult-whole-again-part-1>>.

Weston, Richard. *Key Buildings of the 20th Century: Plans, Sections and Elevations*. New York: W.W. Norton &, 2010. Print.

Xinci/Wang (655498787)  
Sophia/Galounis (651943593)

ARCH 101 ITA FALL 2012