

David Chipperfield Architects

PRINCIPAL ARCHITECT(S): David Chipperfield

LOCATION: London, England; Berlin, Germany;
Milan, Italy; Shanghai, China

FIRM OPENED: 1985

EMPLOYEES: 250+



FIRM PHILOSOPHY

David Chipperfield Architects follow what they term a “consistent philosophical approach” for each project that the firm takes on, rather than following some “predetermined house style”. The architects strive to develop a unique design for each project by integrating their design with the project’s corresponding context and desired function while maintaining certain expectations such as quality of design, budget control, skillful project management, optimal value of product, and overall quality. To achieve such aspirations, the firm values communication and collaboration between the client, the consultants, the contractors, and the end users throughout the production of a project to ensure that all areas are covered. David Chipperfield also values his participation in his firm as he remains an integral component of the firm by actively supervising and contributing to the design of each project.

HISTORY

David Chipperfield is a British architect born in London. He has worked for other architecture firms until he established his own practice, David Chipperfield Architects in 1984. Over the years, David Chipperfield Architects has won more than fifty national and international competitions and multiple RIBA, RFAC, and AIA awards. Some of their more notable designs include America’s Cup Building ‘Veles e Vents’ in Valencia Spain which won the RIBA Stirling Prize in 2007 and the Neues Museum in Berlin which won the Mies van der Rohe Award in 2011.

PROJECT TYPE

David Chipperfield Architects accepts work for both public and private sectors and has completed a wide variety of projects including museums, galleries, libraries, apartments, private houses, hotels, offices, masterplans, and retail facilities. The location of their projects are just as diverse, spanning internationally. The firm also covers interior design projects as well as design on the smaller scale of furniture, tableware, and lighting.

COMPLETED PROJECTS

1997 River and Rowing Museum in Oxfordshire, UK
2001 Ernsting Service Centre in Coesfeld-Lette, Germany
2004 Parkside Apartments in Berlin, Germany
2005 Figge Art Museum in Davenport, Iowa, USA
2006 America’s Cup Building in Valencia, Spain
2007 Liangzhu Culture Museum in Hangzhou, Zhejiang province, China
2011 Turner Contemporary in Margate, Kent, UK
2011 The Hepworth Wakefield in Wakfield, West Yorkshire, UK

REFERENCES

Mafu, Emak. David Chipperfield Architects, December 1998. Web. 16 November 2012.
<<http://www.davidchipperfield.co.uk>>

Veles e Vents (Sails and Winds) or America's Cup Building

LOCATION: Valencia, Spain
COMPLETION : 2005-2006
BUILDING TYPE: Public Venue



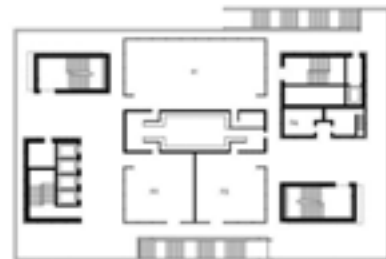
BUILDING TYPE + PROGRAM

Built for the 2007 America's Cup, an offshore racing competition, the building serves as both a central base for teams and sponsors and a public venue for viewing. The ground floor is a lobby and reception area for racing participants and each floor offers large, cantilevered decks for uninterrupted viewing. The building also contains restaurants, bars, and information points.

BUILDING DESIGN INTENTIONS

The building itself is predominantly white in color, with the use of concrete and white painted steel so the brightly colored furniture is used to offset this and differentiate between different areas. The stacked and shifted horizontal decks extend from the building to the newly completed canal linking the port to the race. Sixty percent of the building is outdoor space to maximize viewing potential.

BUILDING PLANS, SECTIONS, ADDITIONAL IMAGES



REFERENCES

David Chipperfield Architects. "America's Cup Building." 8 November 2012
<<http://www.davidchipperfield.co.uk/>>

Gregory, Rob. *Key Contemporary Buildings: Plans, Sections, and Elevations*. New York: W.W. Norton, 2008. Print.